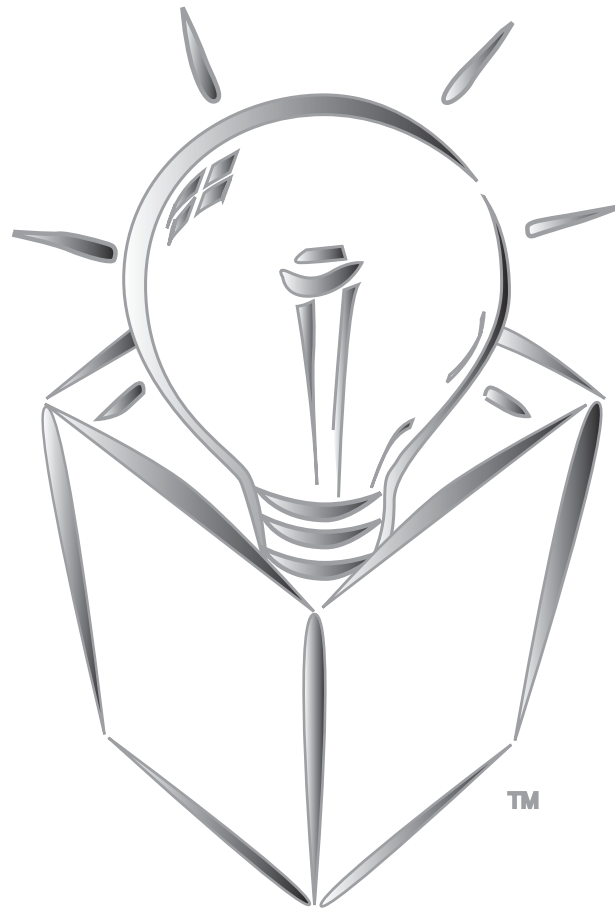


TEKO
2012



**ENCLOSURE
SOLUTIONS**

TEKO ENCLOSURE SOLUTIONS

The new message from TEK0 means: creativity, innovation and technologically breakthroughs in the standard and custom TEK0 enclosures system. Our mission is for our customers to offer the best enclosure solutions, thereby enhancing the success of their products and helping to gain a competitive advantage through innovative electronics enclosures. Teko has more than 50 years experience in the design and production of high quality enclosures. The engineering staff at TEK0 can help you work your design into an attractive enclosure that will meet your packaging requirements. TEK0 has been supplying enclosures for years to market-leading companies in the areas of:



TELECOMMUNICATIONS

HOME AUTOMATION

INDUSTRIAL AUTOMATION

WELLNESS



ACCESS CONTROL

AUTOMOTIVE

MEDICAL TECHNOLOGY

COMPUTER EQUIPMENT



HEADQUARTERS



DESIGN



QUALITY



SERVICE



24 HOURS



PRODUCTION

Our web site www.teko.it for detailed product information as well as downloadable drawings. Strong Technical Support Department and Extensive Knowledge of Custom Dedicated Sales & Customer Service Team with professional skills for Technical Advice and Quotations. The TEKO sales-service department constantly monitors orders and shipments and provides fast response to our customers enquires. Proper packing and labelling assure quality delivery of quality products.



ORDERING



DELIVERY



ENVIRONMENT

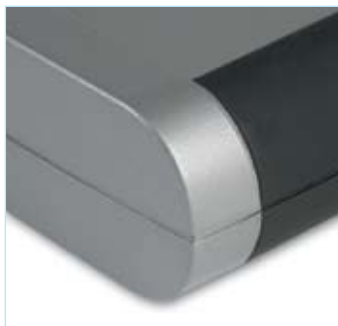
TEKO has always made every effort in the research of new technical solutions compatible with low environmental impact. Environment can be protected in many ways, this is the reason why TEKO has always made every effort in the research of new technical solutions compatible with low environmental impact. • All plastic materials used in the manufacture of TEKO enclosures are completely recyclable. • TEKO enclosures are shrink-wrapped in a film in conformity with CEE regulations. Such film is made of a 100% recyclable PPV/FP compound. • The TEKO carton packings are fully recyclable. • In order to fulfil the regulations within the framework of the RoHS and WEEE guidelines, TEKO is no longer using hazardous substances in its plastic, metal and accessories.

CATALOGUE - WEB

The new catalogue contains the latest addition to our products line to help you meet your most demanding design and application requirements. On TEKO new website are available the complete detailed part drawings in various format, materials data-sheet and the downloadable PDF complete catalogue.



When ordering please specify: part number, colours and quantity.



DESIGN

TEKO introduces a new model in the TEK MAG range with different dimensions. Hand-held enclosure, moulded in TEKNIU[®], a special magnesium alloy, that will convince you thanks to the ultra-light weight, the absolute strength, and the shielding properties of the three models available. The side profiles have a special black soft-feel surface to assure a secure grip. The model is equipped with IP67 sealing kits. The versions with "B" have a battery compartment for two 1,5 mignon cells (AAA) while the models with "B2" have a battery compartment for four 1,5V mignon cells (AAA). The recessed area on the covers can accept a keypad membrane or a LCD display. Closure by four screws. Two-tone colour version: Graphite grey /Black RAL 9004.

Part-No	Ext. Dimensions			Material	Max PCB Size		Screws	Batteries	Accessories
	L	W	H		L	W			
Graphite Gray / Black - / RAL 9004	-	-	-	-	-	-	-	-	-
MTG01K.34	125	87	23,5	MG	103	79	4	-	-
MTG01-BK.34	125	87	23,5	MG	103	79	4+4	2 x AAA	-
MTG01-B2K.34	125	87	23,5	MG	103	79	4+4	4 x AAA	-



DESIGN

Series of small anodized aluminium enclosures with multi-shot moulded (ABS+TPU) two-tone coloured front cover panels. They have co-moulded sealing to protect against water and from dust (IP65). The internal guides allow an easy assembly of PCB. Closing by eight screws.

	Part-No		Ext. Dimensions			Material	Max PCB Size				Accessories
	Silver RAL 9006	Black RAL 9004	L	W	H		L	W			
MTK4P	MTK465PK.1	MTK465PK.9	75	44	24	Al	65	39,4	8	-	-
	MTK480PK.1	MTK480PK.9	90	44	24	Al	80	39,4	8	-	-
MTK5P	MTK580PK.1	MTK580PK.9	90	52	21	Al	80	47,0	8	-	-
	MTK5110PK.1	MTK5110PK.9	120	52	21	Al	110	47,0	8	-	-
MTK6P	MTK680PK.1	MTK680PK.9	90	67	19	Al	80	62,4	8	-	-
	MTK6110PK.1	MTK6110PK.9	120	67	19	Al	110	62,4	8	-	-



Custom Membranes



Mod. TN23-B



Mod. TN23-B2



Mod. TN23-B2

DESIGN

New models from TEKNET series featuring an increased height. ABS hand-held enclosures with elastomer grips (TPU) on the sides. Matt surface finishing. The recessed area on the cover is suitable to accept a keypad membrane or an aluminium panel. The models with "B" have a battery compartment for one 9V Battery (PP3) or two 1,5V cells (AA). The models with "B2" have a battery compartment for two 9V batteries (PP3) or four 1,5V cells (AA). Closing by four screws. Upon request, aluminium panel "APTB"; standard keypad membrane "M", "MW", "M58", "M59".

	Part-No		Ext. Dimensions			Material	Max PCB Size				Accessories
	Black / Dark Grey RAL 9004 / RAL 7012	White / Light Grey RAL 9002 / RAL 9018	L	W	H		L	W			
TN13.29	TN13.30	155	96	30,6	ABS+TPU	138	77	4	-	M, MW, M58, M59	
TN23.29	TN23.30	155	96	35	ABS+TPU	138	77	4	-	M, MW, M58, M59	
TN33.29	TN33.30	155	96	40,6	ABS+TPU	138	77	4	-	M, MW, M58, M59	
TN23-B.29	TN23-B.30	155	96	35	ABS+TPU	95	77	4	2 x AA / 1 x 9V	M, MW, M58, M59	
TN23-B2.29	TN23-B2.30	155	96	35	ABS+TPU	81	59	4	4 x AA / 2 x 9V	M, MW, M58, M59	
TNP23.29	TNP23.30	155	96	55	ABS+TPU	138	77	4	-	-	



DESIGN

Rectangular rings especially designed as accessories for the "WITEK"-Series and developed to improve protection from powder and against water. They are available in seven different colours to obtain a tailor-made solution reflecting the identity of customer or application. From quick and easy assembly, they fit perfectly all around the closed box.

Item Code	Part-No	Colour Description	Ext. Dimensions			Material	Max PCB Size		Screws	Battery	Accessories
			L	W	H		L	W			
RWK-2.12		Blue / RAL 5010	80	56	15	TPU					
RWK-2.37		Yellow / RAL 1018	80	56	15	TPU					
RWK-2.38		Green / RAL 6024	80	56	15	TPU					
RWK-2.39		Red / RAL 3018	80	56	15	TPU					
RWK-2.4		Dark Gray / RAL 7016	80	56	15	TPU					
RWK-2.5		Light Gray / RAL 9018	80	56	15	TPU					
RWK-2.9		Black / RAL 9004	80	56	15	TPU					
RWK-3.12		Blue / RAL 5010	90	46	13	TPU					
RWK-3.37		Yellow / RAL 1018	90	46	13	TPU					
RWK-3.38		Green / RAL 6024	90	46	13	TPU					
RWK-3.39		Red / RAL 3018	90	46	13	TPU					
RWK-3.4		Dark Gray / RAL 7016	90	46	13	TPU					
RWK-3.5		Light Gray / RAL 9018	90	46	13	TPU					
RWK-3.9		Black / RAL 9004	90	46	13	TPU					

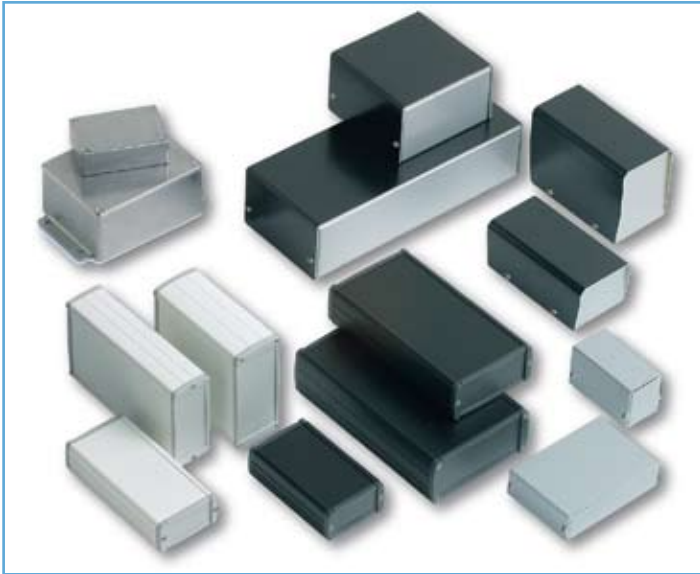
SLS



DESIGN

Attractive and modern designed, this box is moulded in transparent metacrylate. It holds twenty tubes with a height of 25 mm or of 40 mm, ideal to store and organise small electronic components.

Item Code	Part-No	Colour Description	Ext. Dimensions			Material	Max PCB Size		Screws	Battery	Accessories
			L	W	H		L	W			
	Transparent	-									
	-	-									
SLS25.0		-	110	110	62	PMMA	-	-	-	-	-
SLS40.0		-	110	110	62	PMMA	-	-	-	-	-



ALUMINIUM

Pg. 8-16



RF

Pg. 17-20



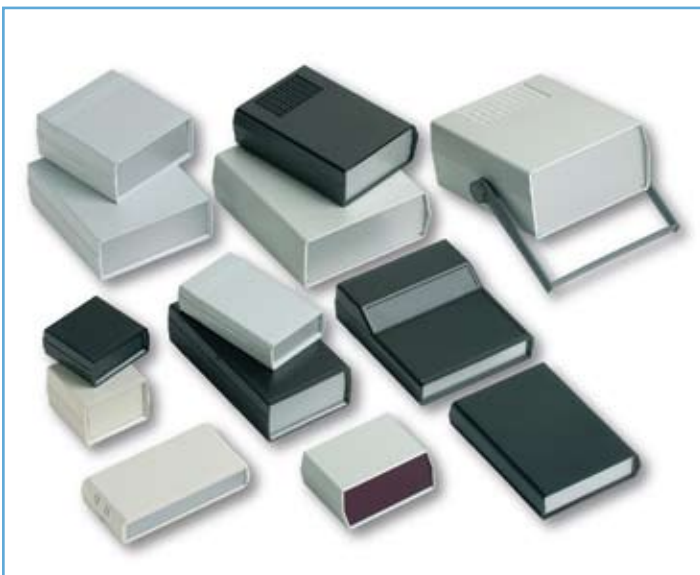
TOP COVER

Pg. 21-24



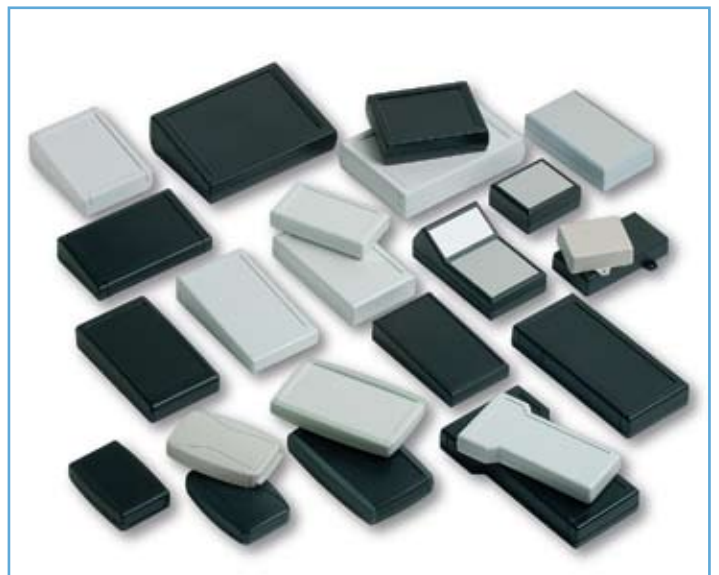
PULT

Pg. 25-26



FRONT PANEL

Pg. 27-32

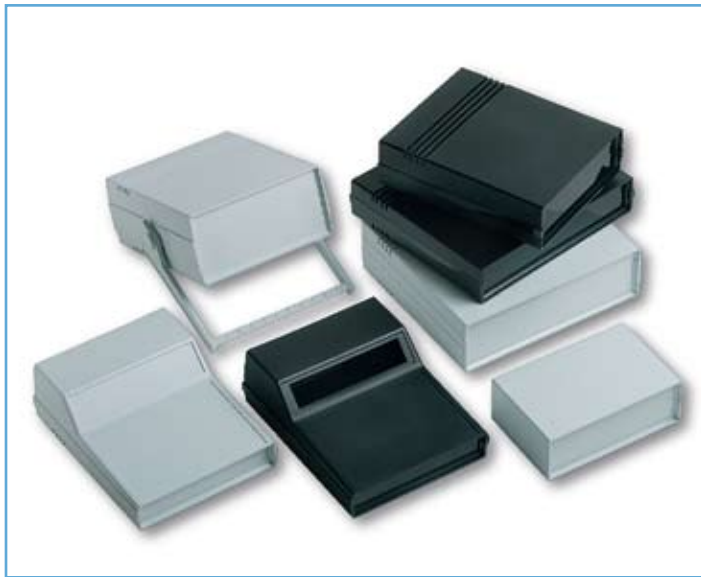


HAND HELD

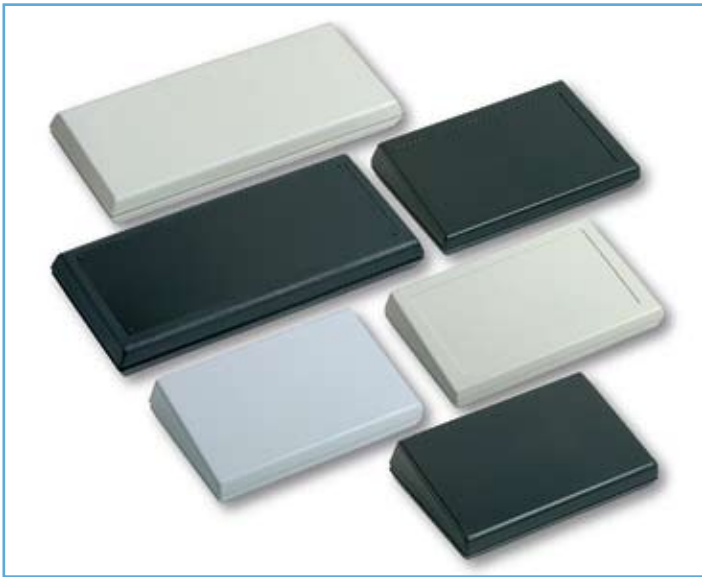
Pg. 33-49



POCKET Pg. 50-56



STRUMENTALIA Pg. 57-58



KEYBOARD Pg. 59-60



TELEBOX Pg. 61-62



POTTING STORAGE Pg. 63-66



ACCESSORIES Pg. 67-68



Range of enclosures manufactured from aluminium for lightweight strength and ease of handling. Speedy and easy to assemble, all screw fastening are punched and tapped. Flanged bases provide high rigidity and assures proper shielding. For our production we use a pre-painted aluminium sheets. The enclosures are supplied covered with a special film which ensures protection during the manufacturing and the transportation and easily removed during the installation. The ALUTEK series are manufactured from die-cast LM24 aluminium. These lightweight enclosures provide excellent screening against EMI/RFI.

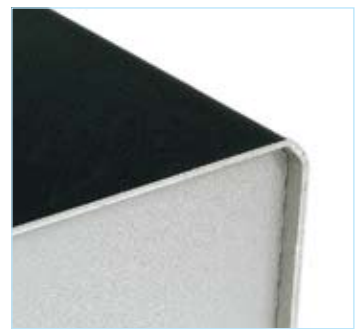
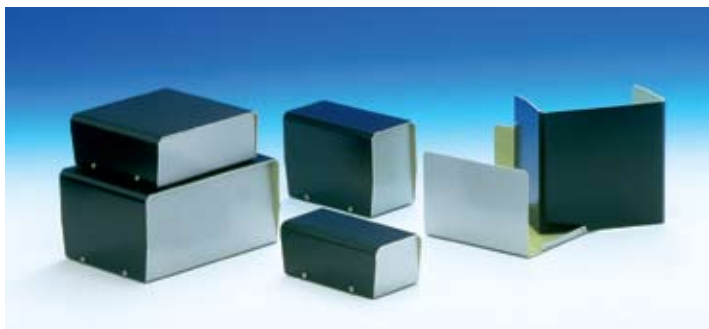
AL BOX



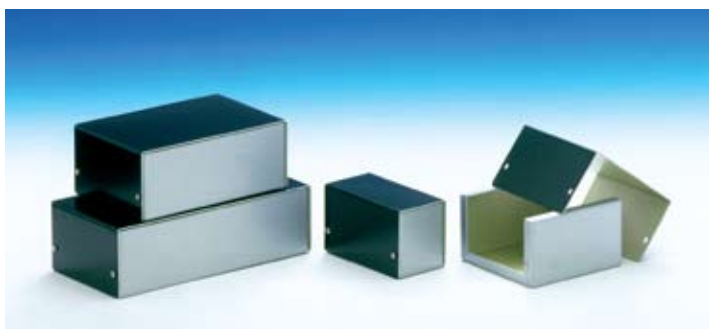
DESIGN

Aluminium enclosures with silver metalised base and cover. Simple and speedy to assemble, with four screws to put in place.

CH - BC

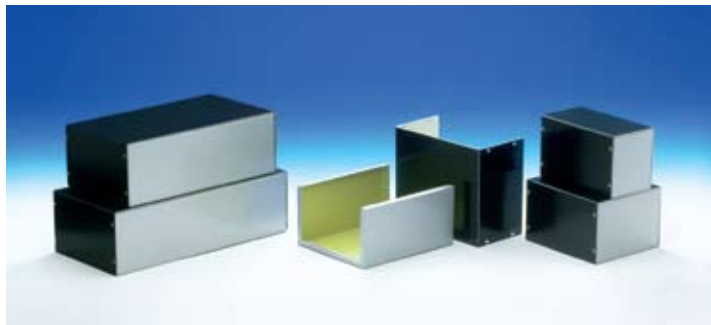
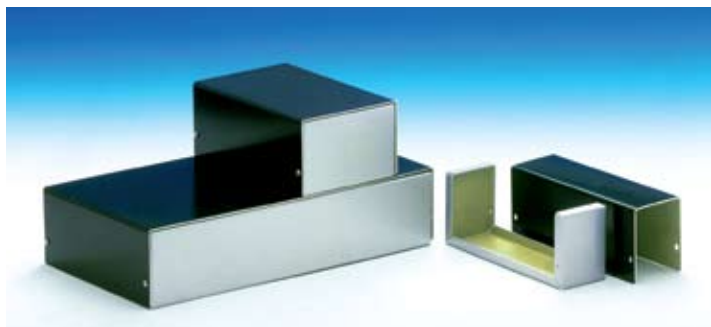


33



DESIGN

Aluminium enclosures with silver metalised base and black cover. Simple and speedy to assemble, with four screws to put in place.



DESIGN

Aluminium enclosures with silver metalised base and black cover. Simple and speedy to assemble, with four or eight screws to put in place.

	Part-No		Ext. Dimensions			Material	Max PCB Size				Accessories
	Black / Silver RAL 9004 / RAL 9006	Silver RAL 9006	L	W	H		L	W			
AL BOX		1/A.1 *	38	72	28	Al	-	-	4	-	-
		2/A.1 *	57.5	72	28	Al	-	-	4	-	-
		3/A.1 *	103	72	28	Al	-	-	4	-	-
		4/A.1 *	143	72	28	Al	-	-	4	-	-
		1/B.1 *	38	72	43	Al	-	-	4	-	-
		2/B.1 *	57.5	72	43	Al	-	-	4	-	-
		3/B.1 *	103	72	43	Al	-	-	4	-	-
		4/B.1 *	143	72	43	Al	-	-	4	-	-
CH		CH/1.18	61	118	48	Al	-	-	4	-	-
		CH/2.18	124	118	48	Al	-	-	4	-	-
		CH/3.18 *	163	118	48	Al	-	-	4	-	-
		CH/4.18	223	118	48	Al	-	-	4	-	-
BC		BC/1.18	61	118	84	Al	-	-	4	-	-
		BC/2.18	124	118	84	Al	-	-	4	-	-
		BC/3.18 *	163	118	84	Al	-	-	4	-	-
		BC/4.18	223	118	84	Al	-	-	4	-	-
33		331.18	53.5	100	63	Al	-	-	4	-	-
		332.18	103.5	100	63	Al	-	-	4	-	-
		333.18	153	100	63	Al	-	-	4	-	-
		334.18	203	100	63	Al	-	-	4	-	-
		335.18	237	100	63	Al	-	-	4	-	-
38		381.18	53.5	160	69.5	Al	-	-	4	-	-
		382.18	104	160	69.5	Al	-	-	4	-	-
		383.18	153	160	69.5	Al	-	-	4	-	-
		384.18	203	160	69.5	Al	-	-	4	-	-
		385.18	253	160	69.5	Al	-	-	4	-	-
		386.18	303	160	69.5	Al	-	-	4	-	-
		387.18	353	160	69.5	Al	-	-	4	-	-
42		421.18	87	160	100	Al	-	-	8	-	-
		422.18	137	160	100	Al	-	-	8	-	-
		423.18	187	160	100	Al	-	-	8	-	-
		424.18	237	160	100	Al	-	-	8	-	-
		425.18	287	160	100	Al	-	-	8	-	-
		426.18	337	160	100	Al	-	-	8	-	-
		427.18	387	160	100	Al	-	-	8	-	-



Extruded Aluminium case with high quality painted finishing. Two ABS front panels, internal slots for PCBs and a recessed area for a keypad membrane. 34 standard models available with variable length and width.

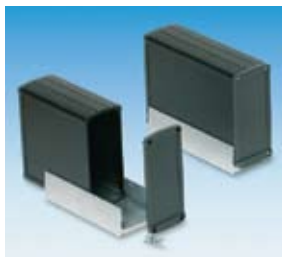
Two-tone colours: White / Light Gray and Black / Dark Gray.

Accessories: battery compartments, wall mounting tabs, non-slip feet, keypad membranes, vertical support, handle, Din-rail mounting, aluminium panels.

Options: anodised finish, alternative paint finishes, custom lengths, custom keypads.

Applications:

- Telecommunications
- Data transmission
- Digital control
- Industrial automation
- Medical & Laboratory technologies
- Home automation



TEKAL



Mod. TEKAL-12/E



Mod. TEKAL-12B

TEKAL2



Mod. TEKAL-22/E



Mod. TEKAL-22B

DESIGN

Extruded aluminium cases with high quality painted finishing. Two ABS front panels, internal slots for PCB's and a recessed area for a keypad membrane. The models with "B" have a battery compartment for two 1,5V mignon-cells (AA) or one 9V battery (PP3). Twenty-four standard models are available with different sizes. Closing by four screws.

	Part-No		Ext. Dimensions			Material	Max PCB Size				Accessories
	Black / Dark Grey RAL 9004 / RAL 7012	White / Light Grey RAL 9002 / RAL 9018	L	W	H		L	W			
TEKAL 1	TEKAL-11.29	TEKAL-11.30	70	59,9	30,9	Al + ABS	60	55,5	4	-	ALP1
	TEKAL-11B.29	TEKAL-11B.30	70	59,9	30,9	Al + ABS	38	55,5	4	1 x 9V	ALP1
	TEKAL-11/E.29	TEKAL-11/E.30	70	59,9	30,9	Al + ABS	60	55,5	4	-	ALP1
	TEKAL-11B/E.29	TEKAL-11B/E.30	70	59,9	30,9	Al + ABS	38	55,5	4	1 x 9V	ALP1
	TEKAL-12.29	TEKAL-12.30	100	59,9	30,9	Al + ABS	90	55,5	4	-	ALP1
	TEKAL-12B.29	TEKAL-12B.30	100	59,9	30,9	Al + ABS	68	55,5	4	1 x 9V	ALP1
	TEKAL-12/E.29	TEKAL-12/E.30	100	59,9	30,9	Al + ABS	90	55,5	4	-	ALP1
	TEKAL-12B/E.29	TEKAL-12B/E.30	100	59,9	30,9	Al + ABS	68	55,5	4	1 x 9V	ALP1
	TEKAL-13.29	TEKAL-13.30	125	59,9	30,9	Al + ABS	115	55,5	4	-	ALP1
	TEKAL-13B.29	TEKAL-13B.30	125	59,9	30,9	Al + ABS	93	55,5	4	1 x 9V	ALP1
TEKAL 2	TEKAL-13/E.29	TEKAL-13/E.30	125	59,9	30,9	Al + ABS	115	55,5	4	-	ALP1
	TEKAL-13B/E.29	TEKAL-13B/E.30	125	59,9	30,9	Al + ABS	93	55,5	4	1 x 9V	ALP1
	TEKAL-21.29	TEKAL-21.30	100	85,8	36,9	Al + ABS	90	80,5	4	-	ALP2
	TEKAL-21B.29	TEKAL-21B.30	100	85,8	36,9	Al + ABS	72	80,5	4	2 x AA / 1 x 9V	ALP2
	TEKAL-21/E.29	TEKAL-21/E.30	100	85,8	36,9	Al + ABS	90	80,5	4	-	ALP2
	TEKAL-21B/E.29	TEKAL-21B/E.30	100	85,8	36,9	Al + ABS	72	80,5	4	2 x AA / 1 x 9V	ALP2
	TEKAL-22.29	TEKAL-22.30	145	85,8	36,9	Al + ABS	135	80,5	4	-	ALP2
	TEKAL-22B.29	TEKAL-22B.30	145	85,8	36,9	Al + ABS	117	80,5	4	2 x AA / 1 x 9V	ALP2
	TEKAL-22/E.29	TEKAL-22/E.30	145	85,8	36,9	Al + ABS	135	80,5	4	-	ALP2
	TEKAL-22B/E.29	TEKAL-22B/E.30	145	85,8	36,9	Al + ABS	115,5	80,5	4	2 x AA / 1 x 9V	ALP2
	TEKAL-23.29	TEKAL-23.30	160	85,8	36,9	Al + ABS	150	80,5	4	-	ALP2
	TEKAL-23B.29	TEKAL-23B.30	160	85,8	36,9	Al + ABS	132	80,5	4	2 x AA / 1 x 9V	ALP2
	TEKAL-23/E.29	TEKAL-23/E.30	160	85,8	36,9	Al + ABS	150	80,5	4	-	ALP2
	TEKAL-23B/E.29	TEKAL-23B/E.30	160	85,8	36,9	Al + ABS	130,5	80,5	4	2 x AA / 1 x 9V	ALP2

TEKAL3



TEKAL-33 + PF/4



Acc. VS1-2-3



Mod. TEKAL-31/E



Acc. ALP3



Custom.TEKAL-32

DESIGN

Extruded aluminium cases with high quality painted finishing. Two ABS front panels, internal slots for PCB's and a recessed area for a keypad membrane. Six standard models are available with different sizes. The models with "E" have mounting wall panels. Closing by eight screws.

	Part-No		Ext. Dimensions			Material	Max PCB Size				Accessories
	Black / Dark Grey RAL 9004 / RAL 7012	White / Light Grey RAL 9002 / RAL 9018	L	W	H		L	W			
TEKAL 3	TEKAL-31.29	TEKAL-31.30	110	106	46	Al + ABS	100	100,5	8	-	PPMT3, ALP3,VS1
	TEKAL-31/E.29	TEKAL-31/E.30	110	106	46	Al + ABS	100	100,5	8	-	ALP3,VS1
	TEKAL-32.29	TEKAL-32.30	145	106	46	Al + ABS	135	100,5	8	-	PPMT3, ALP3,VS2, M, MW
	TEKAL-32/E.29	TEKAL-32/E.30	145	106	46	Al + ABS	135	100,5	8	-	ALP3,VS2, M, MW
	TEKAL-33.29	TEKAL-33.30	175	106	46	Al + ABS	165	100,5	8	-	PPMT3, ALP3,VS3
	TEKAL-33/E.29	TEKAL-33/E.30	175	106	46	Al + ABS	165	100,5	8	-	ALP3,VS3

TEKAL4



Mod. TEKAL-42/H

DESIGN

Extruded anodised aluminium cases with sliding cover aluminium panel. Two ABS front panels, internal slots for PCB's. The models with "H" have a plastic handle bar with eight position locking. Two different lengths. Closing by eight screws.

	Part-No		Ext. Dimensions			Material	Max PCB Size				Accessories
	Black / Dark Grey RAL 9004 / RAL 7012	Silver / Light Grey RAL 9006 / RAL 9018	L	W	H		L	W			
TEKAL 4	TEKAL-41.29	TEKAL-41.31	110	167	53	Al + ABS	100	160	8	-	H2, ALP4
	TEKAL-41/H.29	TEKAL-41/H.31	110	167	53	Al + ABS	100	160	8	-	ALP4
	TEKAL-42.29	TEKAL-42.31	210	167	53	Al + ABS	200	160	8	-	H2, ALP4
	TEKAL-42/H.29	TEKAL-42/H.31	210	167	53	Al + ABS	200	160	8	-	ALP4

TEKAM 1



Mod. TEKAM-12/E

TEKAM 2



Mod. TEKAM-22/E

TEKAM 3

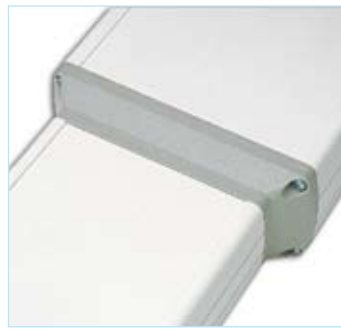


Mod. TEKAM-32/E

DESIGN

Extruded aluminium case with powder coating and two rubber sealing kits to protect against water and from dust (IP65). Two metal front panels, internal slots for PCB's and a recessed area for a keypad membrane. The models with "E" have mounting wall metal panels. Closing by four or eight screws.

	Part-No		Ext. Dimensions			Material	Max PCB Size				Accessories
	White RAL 9002	Black RAL 9004	L	W	H		L	W			
TEKAM1	TEKAM-11.7	TEKAM-11.9	71	62,9	34,5	Al	60	55,5	4	-	ALP1, TKAMSK1
	TEKAM-11/E.7	TEKAM-11/E.9	71	62,9	34,5	Al	60	55,5	4	-	TKAMSK1
	TEKAM-12.7	TEKAM-12.9	101	62,9	34,5	Al	90	55,5	4	-	ALP1, TKAMSK1
	TEKAM-12/E.7	TEKAM-12/E.9	101	62,9	34,5	Al	90	55,5	4	-	TKAMSK1
	TEKAM-13.7	TEKAM-13.9	126	62,9	34,5	Al	115	55,5	4	-	ALP1, TKAMSK1
	TEKAM-13/E.7	TEKAM-13/E.9	126	62,9	34,5	Al	115	55,5	4	-	TKAMSK1
TEKAM2	TEKAM-21.7	TEKAM-21.9	101	88,5	40,5	Al	90	80,5	4	-	ALP2, TKAMSK2
	TEKAM-21/E.7	TEKAM-21/E.9	101	88,5	40,5	Al	90	80,5	4	-	TKAMSK2
	TEKAM-22.7	TEKAM-22.9	146,5	88,5	40,5	Al	135	80,5	4	-	ALP2, TKAMSK2
	TEKAM-22/E.7	TEKAM-22/E.9	146,5	88,5	40,5	Al	135	80,5	4	-	TKAMSK2
	TEKAM-23.7	TEKAM-23.9	160	88,5	40,5	Al	150	80,5	4	-	ALP2, TKAMSK2
TEKAM-23/E.7	TEKAM-23/E.9	160	88,5	40,5	Al	150	80,5	4	-	TKAMSK2	
TEKAM3	TEKAM-31.7	TEKAM-31.9	111,5	109	49,5	Al	100	100,5	8	-	ALP3, VS1, TKAMSK3
	TEKAM-31/E.7	TEKAM-31/E.9	111,5	109	49,5	Al	100	100,5	8	-	TKAMSK3
	TEKAM-32.7	TEKAM-32.9	146,5	109	49,5	Al	135	100,5	8	-	ALP3, VS2, TKAMSK3
	TEKAM-32/E.7	TEKAM-32/E.9	146,5	109	49,5	Al	135	100,5	8	-	TKAMSK3
	TEKAM-33.7	TEKAM-33.9	176,5	109	49,5	Al	165	100,5	8	-	ALP3, VS3, TKAMSK3
	TEKAM-33/E.7	TEKAM-33/E.9	176,5	109	49,5	Al	165	100,5	8	-	TKAMSK3



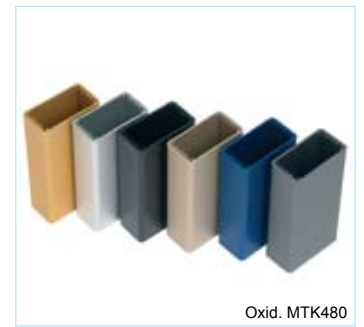
Mod. TEKAL-T1B

DESIGN

Extruded aluminium cases with high quality finishing, ergonomically designed for a comfortable fit into the user's hand. Perfect for instrument or mobile data enclosures requiring a keypad and display. Internal PCB guides. The model with "-B" has a battery compartment for two 1,5V mignon-cells (AA) or one 9V battery (PP3). Closing by twelve screws.

	Part-No		Ext. Dimensions			Material	Max PCB Size				Accessories
	Black / Dark Grey	White / Light Grey	L	W	H		L	W			
	RAL 9004 / RAL 7012	RAL 9002 / RAL 9018									
TEKAL-T	TEKAL-T1.29	TEKAL-T1.30	265,5	105,9	45,8	Al + ABS	100/135	100,5/80,5	12	-	ALP2/3
	TEKAL-T1B.29	TEKAL-T1B.30	265,5	105,9	45,8	Al + ABS	100/117	100,5/80,5	12	2 x AA / 1 x 9V	ALP2
	TEKAL-T2.29	TEKAL-T2.30	280,5	105,9	45,8	Al + ABS	100/150	100,5/80,5	12	-	ALP2/3
	TEKAL-T2B.29	TEKAL-T2B.30	280,5	105,9	45,8	Al + ABS	100/132	100,5/80,5	12	2 x AA / 1 x 9V	ALP2

MINITEKAL 4-6



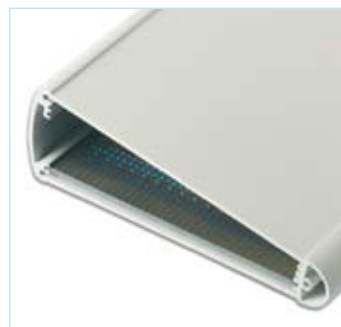
Oxid. MTK480

DESIGN

Compact extruded anodised aluminium enclosures. Two aluminium front cover panels with two rubber sealing kits to protect against water and from dust. Internal slots for PCB's. Closing by eight screws.

	Part-No		Ext. Dimensions			Material	Max PCB Size				Accessories
	Silver	Black	L	W	H		L	W			
	RAL 9006	RAL 9004									
MTK4 MTK6	MTK465.1	MTK465.9	71	43	23	Al	65	39,4	8	-	-
	MTK480.1	MTK480.9	86	43	23	Al	80	39,4	8	-	-
	MTK680.1	MTK680.9	86	66	18	Al	80	62,4	8	-	-
	MTK6110.1	MTK6110.9	116	66	18	Al	110	62,4	8	-	-

TEKAL 3 SLOPE



Acc. MT7.0

DESIGN

Inclined extruded aluminium case with high quality painted finishing. Two ABS side panels, internal guides for PCB, recessed area for membrane keypad. Closing by six screws. Two colours combinations: black RAL 9004 / grey RAL 7012 - white RAL 9002 / light grey RAL 9018. Upon request wall-suspension element "MT7.0".

	Part-No		Ext. Dimensions			Material	Max PCB Size				Accessories
	Black / Dark Grey	White / Light Grey	L	W	H		L	W			
	RAL 9004 / RAL 7012	RAL 9002 / RAL 9018									
TEKAL-31SP.29	TEKAL-31SP.29	TEKAL-31SP.30	111	121	44	Al + ABS	100	100	6	-	MT7.0
	TEKAL-32SP.29	TEKAL-32SP.30	171	121	44	Al + ABS	160	100	6	-	MT7.0
	TEKAL-33SP.29	TEKAL-33SP.30	211	121	44	Al + ABS	200	100	6	-	MT7.0



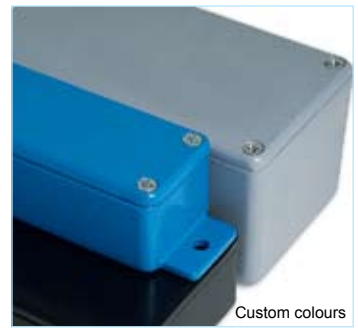
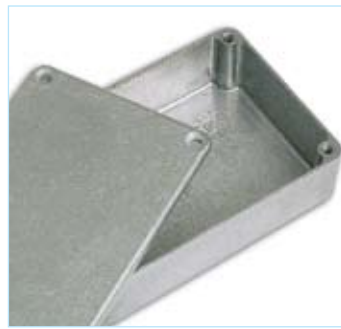
TEKMAG



DESIGN

Innovative range of hand-held enclosures, moulded in Teknium®, a special magnesium alloy, that combines ultra-light weight with absolute strength, and high shielding properties. Side profiles with special soft-feel surface, sealing kit for IP67 protection class. The model with "B" has a battery compartment for two 1,5V mignon cells (AA) or for one 9V battery (PP3). The model with "B2" has a battery compartment for four 1,5V mignon cells (AA) or for two 9V batteries (PP3). Recessed area on the cover to accept a keypad membrane or a LCD display. Closing by four screws. Available in two tone colours version: Graphite grey / Black RAL 9004.

Part-No	Ext. Dimensions			Material	Max PCB Size		Screws	Battery	Accessories
	L	W	H		L	W			
Graphite Gray / Black - / RAL 9004	-	-	-	-	-	-	-	-	-
TG22K.34	157	98,8	31,4	MG	146	85	4	-	M, MW, M58, M59
TG22-BK.34	157	98,8	31,4	MG	146	85	4+4	2 x AA / 1 x 9V	M, MW, M58, M59, AB9
TG22-B2K.34	157	98,8	31,4	MG	146	85	4+4	4 x AA / 2 x 9V	M, MW, M58, M59, AB9



Custom colours



Flanged Model

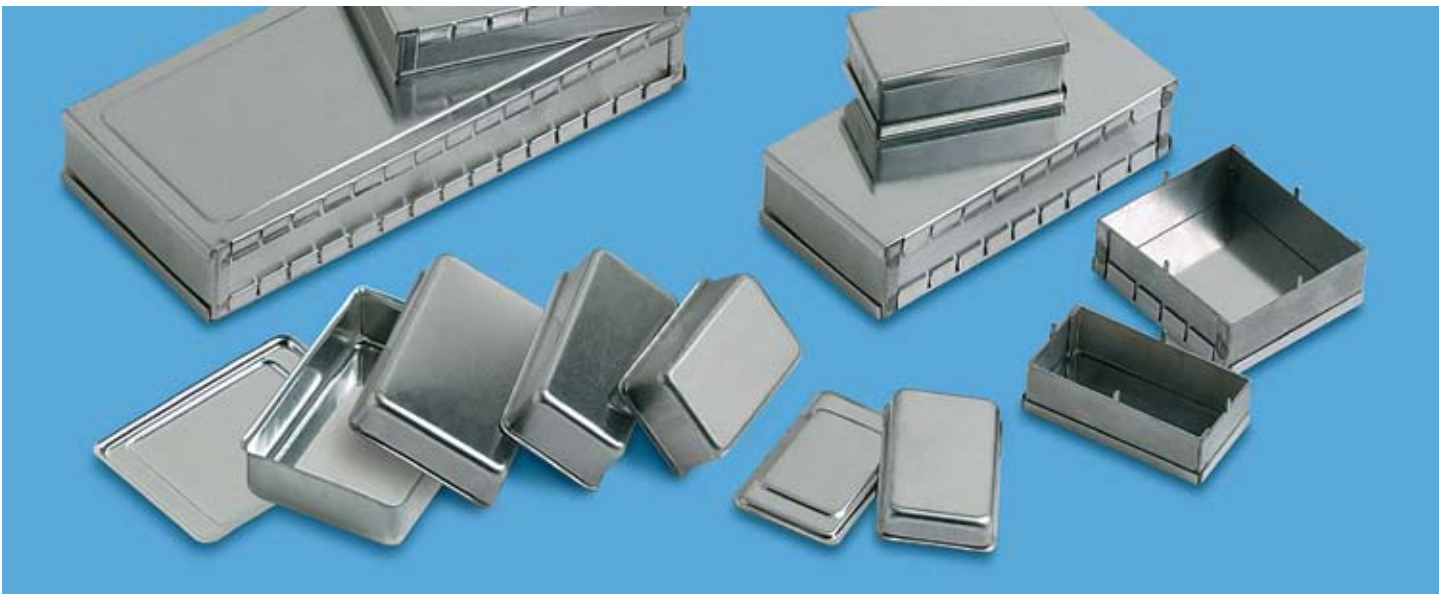


Custom.AL-24X

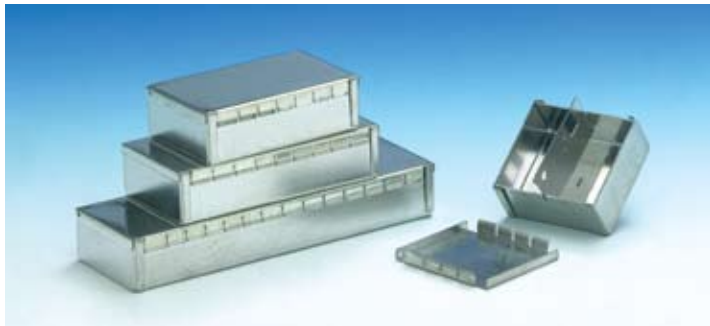
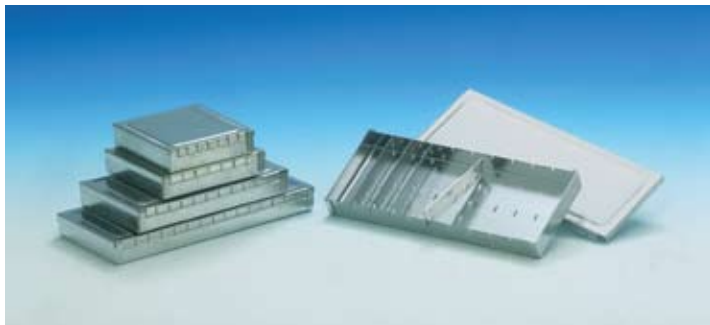
DESIGN

These aluminium die-cast enclosures provide excellent screening against EMI-RFI. Integral PCB guides are incorporated in some of the styles (X). The series from "AL16x" to "AL25x" have pre-drilled external mounting flanges, for quick and easy mounting. Simple and speedy to assemble, with four or six stainless steel screws to put in place.

	Part-No	Ext. Dimensions			Material	Max PCB Size				Accessories	
		Raw	L	W		H	L				W
	AL-1.0		60	55	30	Al	55,8	20	4	-	-
	AL-2.0		80	55	25	Al	75,8	15	4	-	-
	AL-3.0		88,9	34,9	29,5	Al	30,5	20	4	-	-
	AL-4.0		114,5	64	30,5	Al	110,5	60	4	-	-
	AL-5.0		114,5	64	55	Al	110,5	60	4	-	-
	AL-6.0		114,5	89,7	55	Al	111	85,7	4	-	-
	AL-7.0		171,5	120,6	55	Al	167,5	116,5	6	-	-
	AL-8.0		171,5	120,6	106	Al	167,5	116,5	6	-	-
	AL-9.0		222,3	146	55	Al	218,3	142	6	-	-
	AL-10.0		222,3	146	106	Al	218,3	142	6	-	-
	AL-11X.0		275	175	65	Al	270,5	55,5	6	-	-
	AL-12X.0		139,7	101,6	76	Al	135,2	66,5	4	-	-
	AL-13X.0		165	127	76	Al	161,5	66,5	6	-	-
	AL-14X.0		120	100	35	Al	116,5	25,5	4	-	-
	AL-15X.0		250	250	100	Al	246	246	8	-	-
	AL-16X.0		114	35,1	29,5	Al	31,3	20	4	-	-
Flanged models	AL-17X.0		139,7	63,6	29,5	Al	110,8	20,1	4	-	-
	AL-18X.0		139,7	63,7	54,9	Al	110,8	45,6	4	-	-
	AL-19X.0		139,7	89,1	54,9	Al	110,5	46,3	4	-	-
	AL-20X.0		200,5	121,6	55	Al	168	45,6	6	-	-
	AL-21X.0		200,5	122,7	106	Al	168	96,6	6	-	-
	AL-22X.0		250,3	146	55	Al	217,8	45,6	6	-	-
	AL-23X.0		170	103	76	Al	135,2	66,5	4	-	-
	AL-25X.0		146	100	35	Al	116,5	25,5	4	-	-

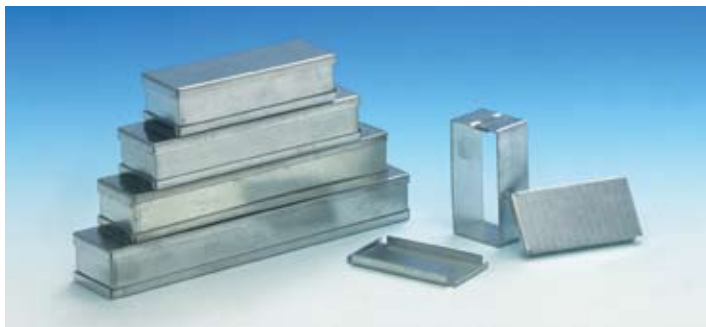
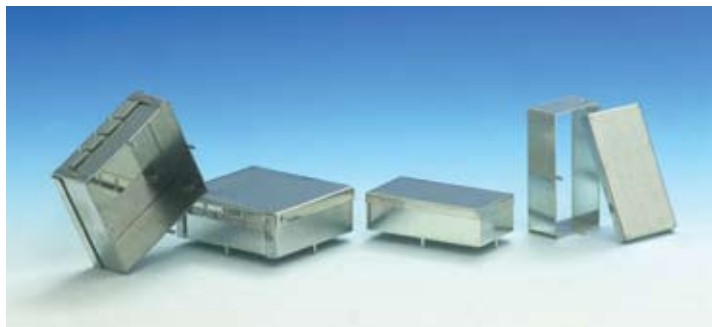


This range of enclosures is especially suitable for EMI and RFI screening at both high and low frequencies. They are manufactured from bright mild steel finished with hot tin lead or electrolytic tin coating, which is readily solderable. The special design of the lid flanges preserves good electrical continuity. RF enclosures have removable covers that give easy access to your electronic assemblies. The series TRIPLATE, 37 and 39 have internal dividers that allow for a convenient compartmentalisation. Applications: • filters • amplifiers • traps • Hybrid packages. TEKO offers a full customising service: drilling, tapping, punching and mounting connectors.

37-39

16

DESIGN

A hot tin-plated steel enclosure with Snap-On, finger-flanged cover and vertical dividers. The dividers have a hole and cutout for wiring. Volume of casing is suitable for easy assembly of professional and High-Technology circuits.

27-29

DESIGN

Hot tin-plated steel enclosures for High/Frequency electronic components assembly. Volume of casing is suitable for easy assembly of professional and High-Technology circuits.

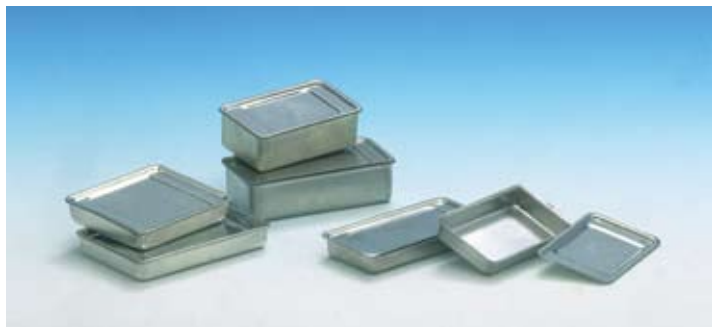
TRIPLATE



DESIGN

An electrolytic tin-plated steel enclosures for High/Frequency electronic components assembly with two slide-on covers. It has one removable horizontal divider that separates the enclosure into two sections. It also has vertical dividers with holes for wiring. Volume of casing is suitable for easy assembly of professional and High-Technology circuits.

MICRO



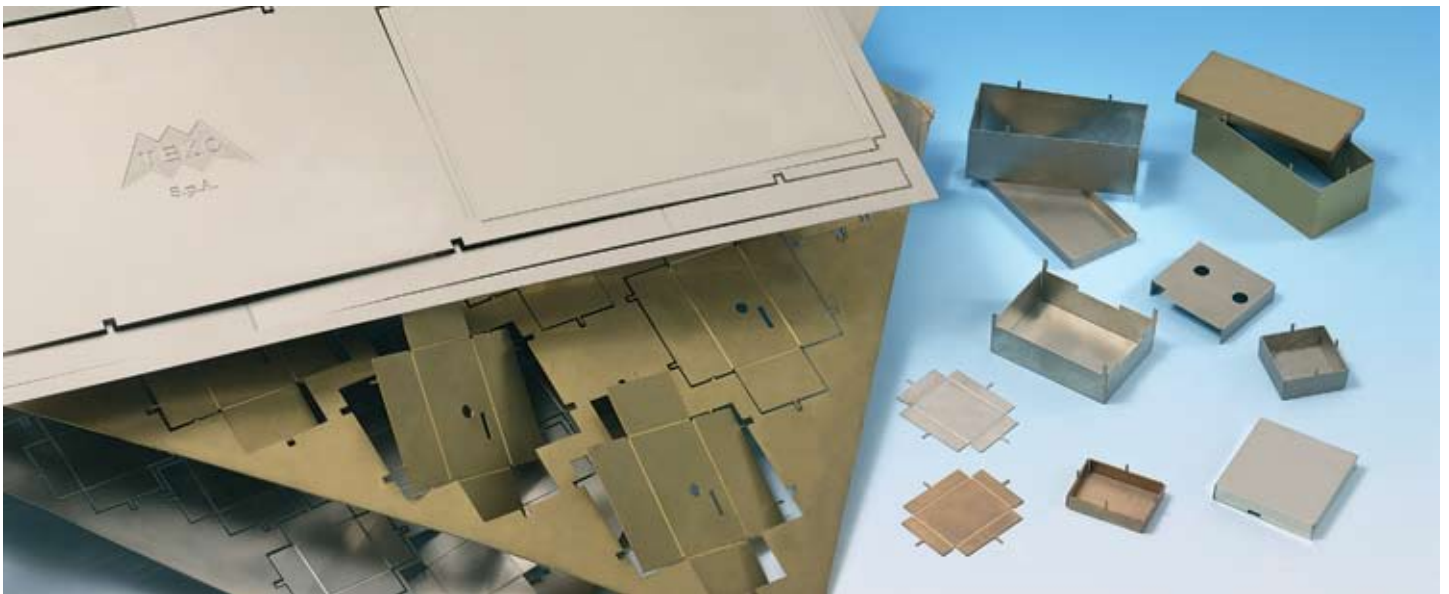
DESIGN

Electrolytic tin-plated steel enclosures for High/Frequency electronic components assembly with a cover that can be soldered on for hermetic sealing. Volume of casing is suitable for easy assembly of professional and High-Technology circuits.

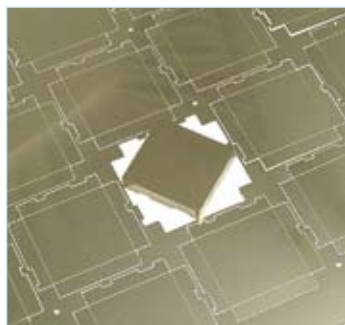
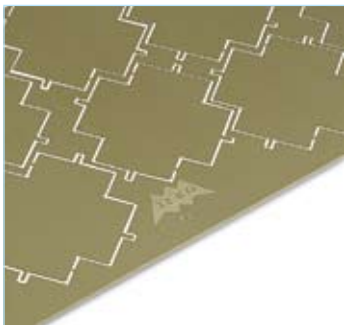
	Part-No	Ext. Dimensions			Material
	Hot tin plated	L	W	H	
37	371.16 *	54	50	26	STEEL
	372.16 *	83	50	26	STEEL
	373.16 *	106	50	26	STEEL
	374.16 *	161	50	26	STEEL
	392.16 *	83	68	28	STEEL
39	393.16 *	122	68	28	STEEL
	394.16 *	161	68	28	STEEL
	271.16 *	54	50	26	STEEL
27	272.16 *	83	50	26	STEEL
	273.16 *	106	50	26	STEEL
	274.16 *	161	50	26	STEEL
	292.16 *	83	68	27	STEEL
	293.16 *	122	68	27	STEEL
29	294.16 *	161	68	27	STEEL
	1661.16 *	67,5	68	17	STEEL
	16	1680.16 *	82,5	68	17
16120.16 *		122	68	17	STEEL
16160.16 *		161	68	17	STEEL

	Part-No	Ext. Dimensions			Material
	Hot tin plated	L	W	H	
Pcb	3710.16 *	54	50	19	STEEL
	4020.16 *	54	29	16	STEEL
	402.16 *	54	29	21	STEEL
	403.16 *	80	29	21	STEEL
	404.16 *	105	29	21	STEEL
	405.16 *	130	29	21	STEEL
Mini	406.16 *	155	29	21	STEEL

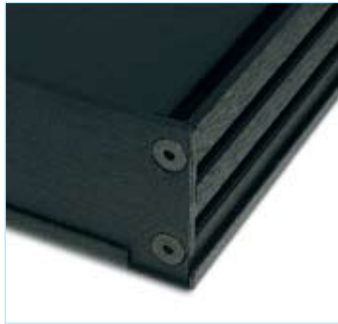
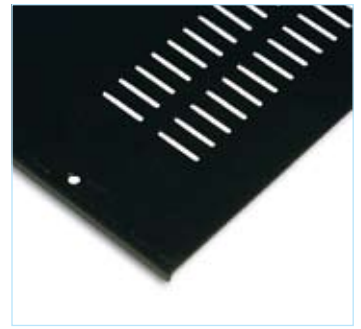
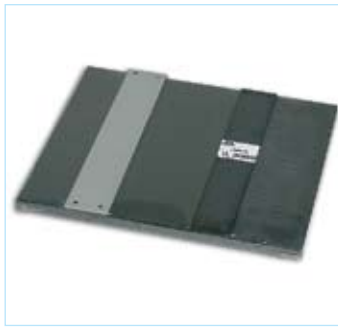
	Part-No	Ext. Dimensions			Material
	Electrolytic tin plated	L	W	H	
Triplate	395.15 *	61,5	76	36	STEEL
	396.15 *	101	76	36	STEEL
	397.15 *	161	76	36	STEEL
	398.15 *	221	76	36	STEEL
	399.15 *	281	76	36	STEEL
	433.15 *	50,5	31,5	9,5	STEEL
Micro	434.15 *	63,5	31,5	9,5	STEEL
	435.15 *	50,5	44	9,5	STEEL
	436.15 *	63,5	44	9,5	STEEL
	443.15 *	50,5	31,5	13	STEEL
	444.15 *	63,5	31,5	13	STEEL
	445.15 *	50,5	44	13	STEEL
	446.15 *	63,5	44	13	STEEL
	453.15 *	50,5	31,5	17,5	STEEL
	454.15 *	63,5	31,5	17,5	STEEL
	455.15 *	50,5	44	17,5	STEEL
456.15 *	63,5	44	17,5	STEEL	



TEKO is specialised in manufacturing customised products. TEKO has the technology of chemical cutting even for small parts. Delivery for small quantities as well. This procedure is very advantageous to realise metal details of a very high precision. Materials: Alpacca, Hard brass and copper. Thickness: from 0.15 mm to 1 mm.



DISSIPATOR



DESIGN

The DISSIPATOR family of modular instrument utilises a versatile selection of aluminium extrusions, together with black steel coverplates to provide a wide range of electronic equipment enclosures. All are easily assembled with just a screwdriver. The extrusions and the back panel are black anodised aluminium, the front panel is silver anodised.

RACK



DESIGN

Series of modern styled enclosures with extremely accurate finishing. The front panel is manufactured from silver anodised aluminium, the cover and the side panels from black steel. Ventilated covers. Panels remove easily while leaving the sub-assembly intact.

ACCESSORIES: internal base mm. 175 x 435 (Mod. "LEVEL") - Flat anodised aluminium handles, silver or black colour ("FLAT RACK") - Round handles in black plastified steel ("ROUND RACK") - Stand with four casters designed for a 1-rack unit up to 17 modules ("C234").

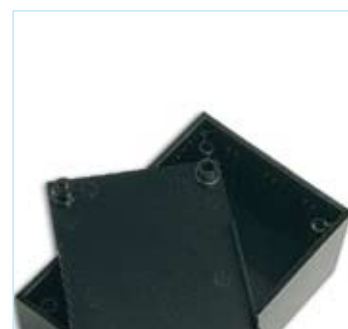
	Part-No	Ext. Dimensions			Accessories
	Black / Silver	L	W	H	
	RAL 9004 / RAL 9006				
DISSIPATOR	DS1470.18	176	126	44	-
	DS2470.18	176	233	44	-
	DS2480.18	285	233	44	-
	DS3470.18	176	334	44	-
	DS3480.18	285	334	44	-
	SL170.18	176	483	44	-
	SL230.18	233	483	44	-
	SL280.18	283	483	44	-

	Part-No	Ext. Dimensions			Accessories
	Black / Silver	L	W	H	
	RAL 9004 / RAL 9006				
RACK	RACK2.18	307	436,5	82,5	LEVEL ROUND RACK FLAT RACK C234
	RACK3.18	307	435	124	
	RACK4.18	307	435	167,5	



The top cover range offers a practical, economical packaging solutions for small or medium sizes electronic devices or circuitry. The design permits easy machining and the top panel is well suited for installation of meters, read-outs and others controls. The enclosures have integral PCB guides in either multiple or high density configuration. The enclosures are manufactured from ABS or polystyrene with either aluminium or plastic panels. Applications: • laboratory test • control panels • mounting kits.

15

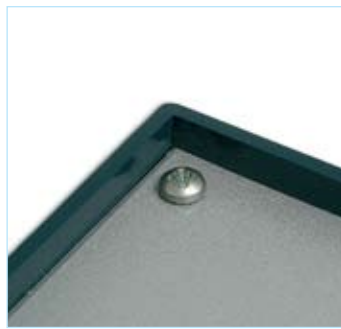
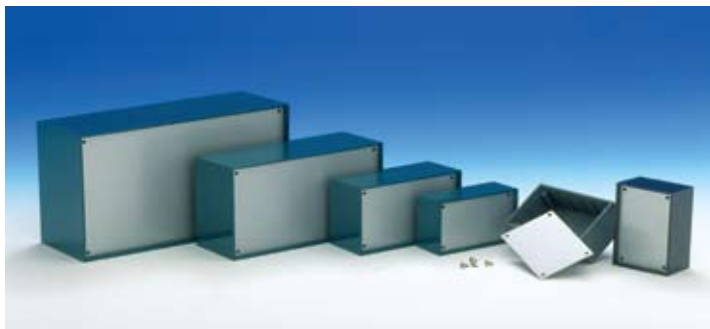


DESIGN

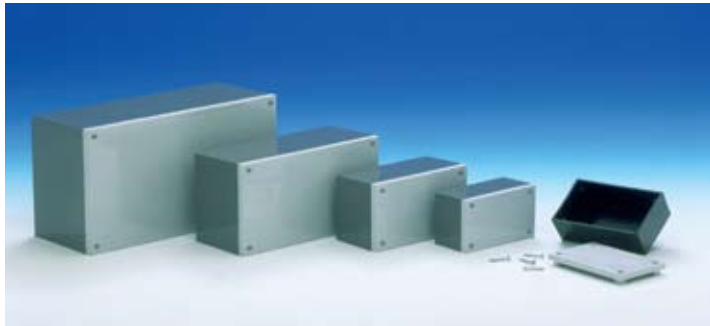
ABS enclosures with a plastic cover and a 0,5 mm aluminium panel. Glossy surface finishing. The cover has a recessed area to hold an 0.5 mm anodized aluminium panel. The base walls have integral PCB guides. Closing by four screws.

	Part-No	-	Ext. Dimensions			Material	Max PCB Size				Accessories
			L	W	H		L	W			
	Black	-									
	RAL 9004	-									
15	151/P.9 *		85	56	36.6	Al + ABS	80	25	4	-	-
	152/P.9		110	70	48.9	Al + ABS	103,5	37	4	-	-
	153/P.9		160	96	63.2	Al + ABS	154	49	4	-	-
	154/P.9		215	130	79.4	Al + ABS	208	64,5	4	-	-

P



CP



DESIGN

ABS enclosures with square corners and glossy surface finishing. The base walls have integral PCB guides. The "P" series have a 1 mm aluminium panel. The models "K/1" and "K/2" are moulded in black polystyrene. The models "M1" and "M1/P" have a flanged panel for easy mounting. "CP" series have two-tone colour scheme, the cover is always in light gray colour. Closing by four screws. Upon request light gray Polystyrene panel suitable for the "P" series (Mod. PP1, PP2, PP3, PP4).

	Part-No			Ext. Dimensions			Material	Max PCB Size			Accessories
	Dark Grey	Black	Petrol blue	L	W	H		L	W		
	RAL 7012	RAL 9004	RAL 5020								
P	P/1.2 *	P/1.9 *	P/1.10 *	85	56	35,5	ABS	80	25	4	PP1
	P/2.2 *	P/2.9 *	P/2.10 *	110	70	48	ABS	103,5	37	4	PP2
	P/3.2	P/3.9	P/3.10	160	96	61	ABS	154	49	4	PP3
	P/4.2	P/4.9	P/4.10	215	130	77	ABS	208	64,5	4	PP4
		K/1.9 *		85	56	35,5	Ps	80	25	4	PP1
		K/2.9 *		110	70	48	Ps	103,5	37	4	PP2
		M1.9		85	56	35,5	ABS	80	25	4	-
		M1/P.9		85	56	35,5	ABS	80	25	4	-

	Part-No		Ext. Dimensions			Material	Max PCB Size			Accessories
	Dark gray / Light gray	Black / Light gray	L	W	H		L	W		
	RAL 7012 / RAL 9018	RAL 9004 / RAL 9018								
CP	CP/1.20 *	CP/1.23 *	85	56	41,4	ABS	80	25	4	-
	CP/2.20	CP/2.23	110	70	53,9	ABS	103,5	37	4	-
	CP/3.20	CP/3.23	160	96	66,9	ABS	154	49	4	-
	CP/4.20	CP/4.23	215	130	82,9	ABS	208	64,5	4	-

COFFER



COFFER A



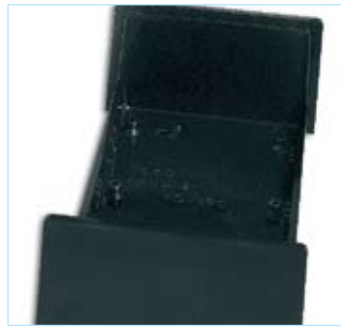
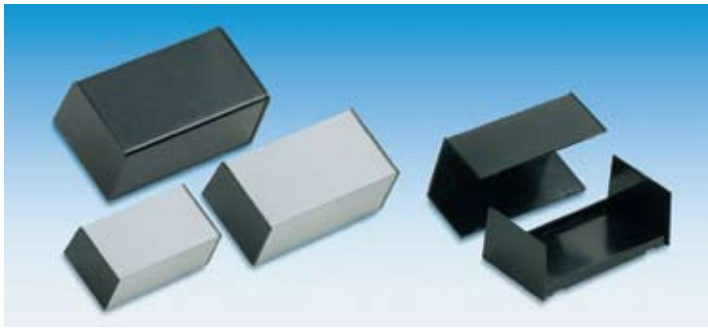
COFFER TP



DESIGN

ABS enclosures with rounded corners. Glossy surface finishing. The base walls have integral PCB guides. The "Coffer A" models have a 1 mm aluminium panel. The "Coffer TP" models have a 0.5 mm anodised aluminium panel and a transparent polycarbonate cover. Closing by four screws.

	Part-No		Ext. Dimensions			Material	Max PCB Size				Accessories
	Light gray RAL 9018	Black RAL 9004	L	W	H		L	W			
COFFER	COFFER-1.5 *	COFFER-1.9	100	55	29	ABS	95	19	4	-	-
	COFFER-2.5	COFFER-2.9	125	70	39	ABS	120	29	4	-	-
	COFFER-3.5	COFFER-3.9	160	95	49	ABS	155	39	4	-	-
	COFFER-4.5	COFFER-4.9	215	130	68,5	ABS	209,5	58	4	-	-
COFFER A	COFFER-A/5.5 *	COFFER-A/5.9	100	55	25	ABS	95	19	4	-	-
	COFFER-A/6.5	COFFER-A/6.9	125	70	35	ABS	120	29	4	-	-
	COFFER-A/7.5	COFFER-A/7.9	160	95	45	ABS	155	39	4	-	-
COFFER TP	COFFER-TP1,5 *	COFFER-TP1.9	100	55	29	ABS+Pc	95	19	4	-	-
	COFFER-TP2.5	COFFER-TP2.9	125	70	39	ABS+Pc	120	29	4	-	-
	COFFER-TP3.5	COFFER-TP3.9	160	95	49	ABS+Pc	155	39	4	-	-
	COFFER-TP4.5	COFFER-TP4.9	215	130	68,5	ABS+Pc	209,5	58	4	-	-



DESIGN

ABS enclosures with two snap together half-shells (one base/one cover) especially suited to wall mounting, available in either a solid (black) or a two-tone colour configuration (the base is always black). The base has integral PCB mounting studs and guides. No screws are required.

	Part-No		Ext. Dimensions			Material	Max PCB Size				Accessories
	Black	Black / Light gray	L	W	H		L	W			
	RAL 9004	RAL 9004 / RAL 9018									
WALL	WALL2.9	WALL2.23	122,5	69,5	43,1	ABS	114	54	-	-	-
	WALL3.9	WALL3.23	154,5	85	59	ABS	146	69	-	-	-
	WALL4.9	WALL4.23	170	99,5	74	ABS	161	84	-	-	-



Small and medium sized desk consoles manufactured from ABS with either rounded or square corners. The "PULT" series is ideally suited to a wide range of benchtop, desktop and vertically-mounted devices. The enclosures have integral PCB guides and mounting studs. Applications: • test equipments • control panels • scientific and medical devices • keyboards and display • computer interfaces.

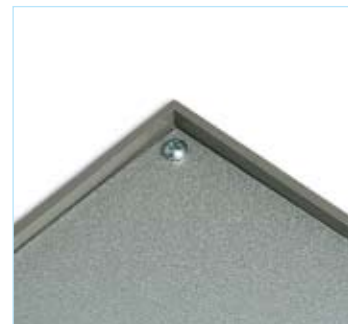
PULT-10



DESIGN

ABS enclosures with either a 10° or 12° incline for easy operation and readability, square corners and four non-skid feet (Mod. PT/4). The base walls have integral PCB guides. Two aluminium panels. Closing by four screws.

PULT-36



DESIGN

ABS enclosures with a 15° inclined 1 mm aluminium panel. The base walls have integral PCB guides and mounting studs. Glossy surface finishing. Closing by four or six screws.

	Part-No			Ext. Dimensions			Material	Max PCB Size			Accessories
	Light gray RAL 9018	Black RAL 9004	Dark gray RAL 7038	L	W	H		L	W		
10	101.5	101.9		85	56	37	ABS	80	25,5	4	-
	102.5	102.9		110	70	48,3	ABS	104	36,5	4	-
	103.5	103.9		160	96	60,5	ABS	153,5	49	4	-
	104.5	104.9		215	130	77	ABS	208	64	4	-
36			362.8	161	97	61,1	ABS	153	82	4	-
			363.8	216	130	77,7	ABS	207	118	4	-
			364.8	311	170	89	ABS	302	150	6	-



EUROPULT P



EUROPULT TP



DESIGN

ABS enclosures with a 15° inclined panel. The base walls have integral PCB guides and mounting studs. Rounded corners. The model "P" has an ABS upper panel. The model "TP" has a transparent polycarbonate cover that protects a 0.5 mm anodised aluminium panel. Glossy surfaces finishing. Closing by four screws.

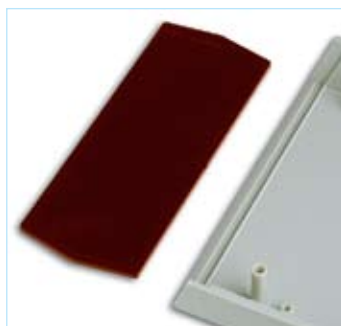
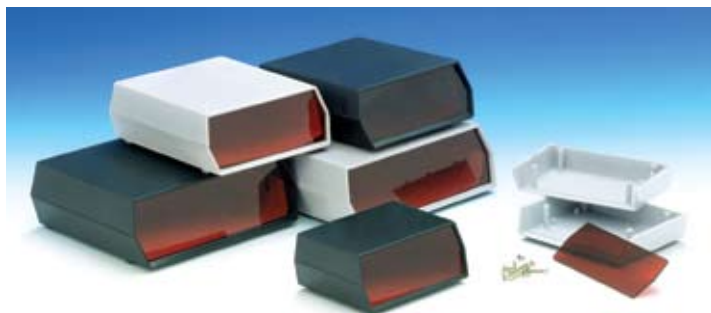
	Part-No		Ext. Dimensions			Material	Max PCB Size				Accessories
	Light gray RAL 9018	-	L	W	H		L	W			
P	115.5	-	161	95	60	ABS	153	81	4	-	-
	215.5	-	216	130	77	ABS	208	118,5	4	-	-
	115P.5	-	161	95	64	ABS	153	81	4	-	-
	215P.5	-	216	130	80,5	ABS	208	118,5	4	-	-
TP	115TP.5	-	161	95	64	ABS+Pc	153	81	4	-	-
	215TP.5	-	216	130	80,5	ABS+Pc	208	118,5	4	-	-



The FRONT PANEL series, available in over fifty models, is ideally suited to a variety of electronic desktop applications. The enclosures are manufactured from high ABS or high impact polystyrene. They are available with either aluminium or plastic front and rear panels. All models have internal guide and PCB mounting studs.

Applications: • alarms and security systems • test equipments • computer peripherals • modems • laboratory technology.

DIGITAL

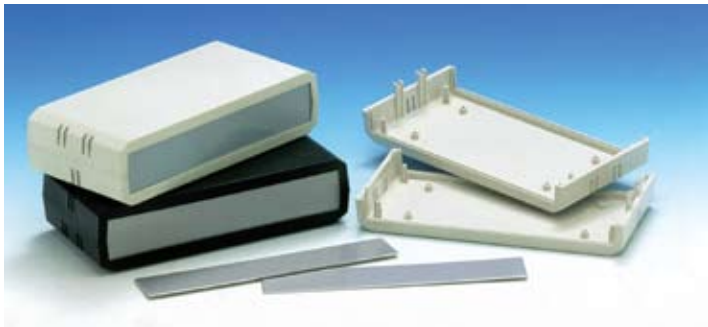


DESIGN

A polystyrene enclosure with a red polystyrene 20° inclined panel. Each half-shell has integral PCB mounting studs. The models "D/13" and "D/14" have in the rear side a cutout for cabling. Matt surface finishing. Closing by four screws.

	Part-No		Ext. Dimensions			Material	Max PCB Size				Accessories
	Light gray	Black	L	W	H		L	W			
	RAL 9018	RAL 9004									
DIGITAL	D-12.5	D-12.9	119,5	89	50	Ps	-	-	4	-	-
	D-13.5	D-13.9	135	150	54	Ps	-	-	4	-	-
	D-14.5	D-14.9	181	155	60	Ps	-	-	4	-	-

DEC-1

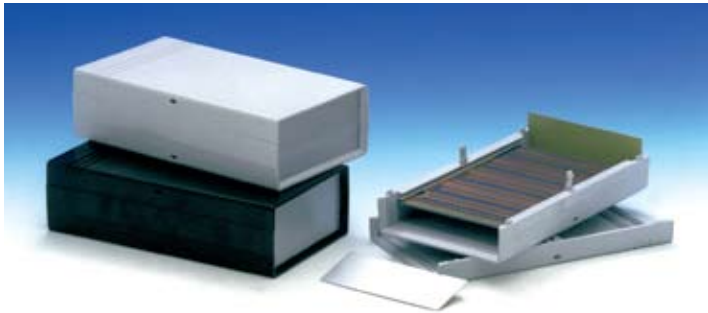


DESIGN

ABS enclosures with aeration slots. Front and rear 1 mm painted aluminium panels. Base and cover have PCB mounting studs. Matt surface finishing. Snap-together closing, no screws required.

Part-No		Ext. Dimensions			Material	Max PCB Size				Accessories
Dark gray RAL 7016	White RAL 9002	L	W	H		L	W			
DEC-1.4	DEC-1.7	80,5	164	36,5	ABS	150,5	71,1	-	-	-

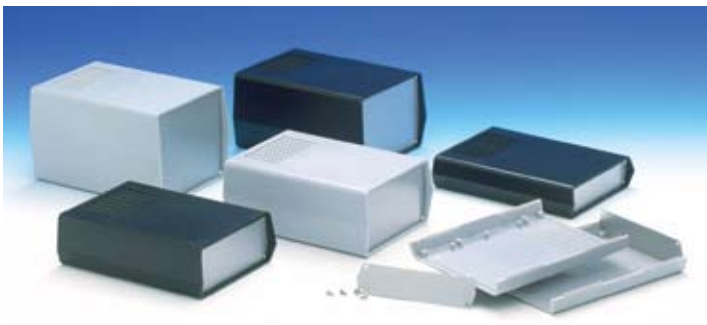
SNAP DESIGNER



DESIGN

ABS enclosures with two 1 mm aluminium panels. Each base and cover have integral PCB guides (Eurocard 100 x 160 mm) inside. Matt surface finishing. Snap-together closing, no screws required.

Part-No		Ext. Dimensions			Material	Max PCB Size				Accessories
Light gray RAL 9018	Black RAL 9004	L	W	H		L	W			
10004.5	10004.9	199,5	110	46,5	ABS	152,5	101,6	-	-	-
10005.5	10005.9	199,5	110	56,5	ABS	152,5	101,6	-	-	-



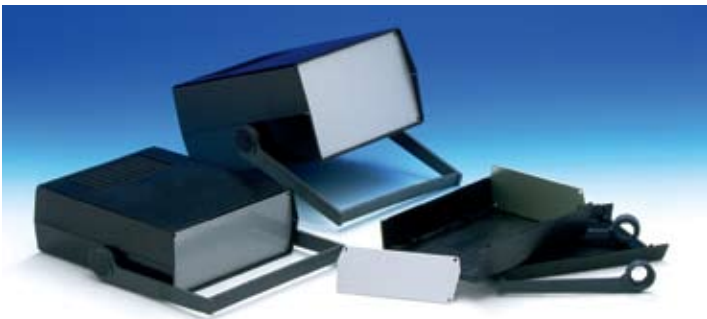
AUS



DESIGN

ABS enclosures with a vented cover and base for aeration. Front and rear 1 mm aluminium panels. Each half-shell has integral PCB guides and mounting studs. Matt surface finishing. Closing by eight screws.

KL-AUS HANDLE

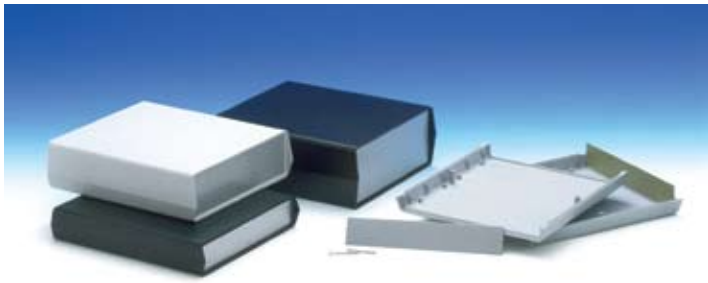


DESIGN

ABS enclosures with a handle that can be locked in any of eight positions and used as a stand. Vented cover and base for aeration. Front and rear 1 mm aluminium panels. Each half-shell has integral PCB guides and mounting studs. Matt surface finishing. Closing by eight screws.

	Part-No		Ext. Dimensions			Material	Max PCB Size				Accessories
	Light gray RAL 9018	Black RAL 9004	L	W	H		L	W			
KL	KL-11.5	KL-11.9	178	128	36	ABS	150	115	8	-	-
	KL-12.5	KL-12.9	178	128	54	ABS	150	115	8	-	-
	KL-22.5	KL-22.9	178	128	72	ABS	150	115	8	-	-
AUS	AUS-11,5	AUS-11.9	198	178	36	ABS	170	162	8	-	-
	AUS-12.5	AUS-12.9	198	178	54	ABS	170	162	8	-	-
	AUS-22.5	AUS-22.9	198	178	72	ABS	170	162	8	-	-
	AUS-23.5	AUS-23.9	198	178	90	ABS	170	162	8	-	-
	AUS-33.5	AUS-33.9	198	178	108	ABS	170	162	8	-	-
HANDLE	KL-41.5	KL-41.9	178	128	54	ABS	150	115	8	-	-
	KL-44.5	KL-44.9	178	128	72	ABS	150	115	8	-	-
	AUS-41,5	AUS-41.9	198	178	54	ABS	170	162	8	-	-
	AUS-44.5	AUS-44.9	198	178	72	ABS	170	162	8	-	-
	AUS-45.5	AUS-45.9	198	178	90	ABS	170	162	8	-	-
	AUS-55.5	AUS-55.9	198	178	108	ABS	170	162	8	-	-

EURO 93

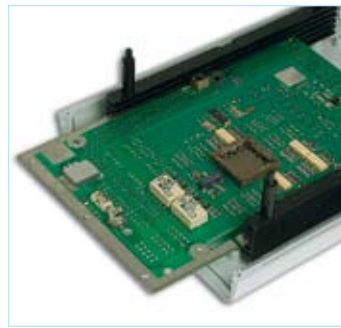
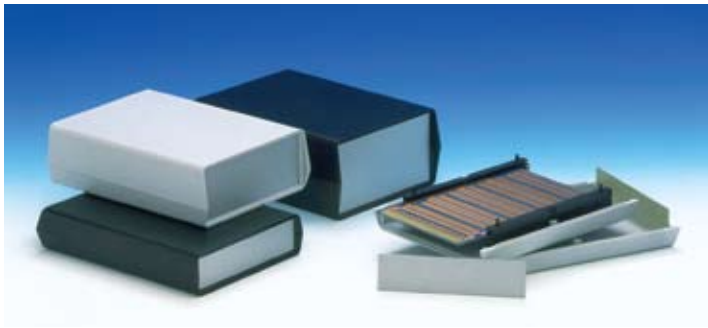


DESIGN

ABS enclosures with two 1 mm aluminium panels. Each half-shell has integral PCB guides and mounting studs. Matt surface finishing. Closing by only two screws.

Part-No		Ext. Dimensions			Material	Max PCB Size				Accessories
Light gray RAL 9018	Black RAL 9004	L	W	H		L	W			
931.5	931.9	178	131,5	36	ABS	158	116	2	-	-
932.5	932.9	178	131,5	54	ABS	158	116	2	-	-
933.5	933.9	178	131,5	72	ABS	158	116	2	-	-
934.5	934.9	198	178	36	ABS	178	162	2	-	-
935.5	935.9	198	178	54	ABS	178	162	2	-	-
936.5	936.9	198	178	72	ABS	178	162	2	-	-

EURO 93C

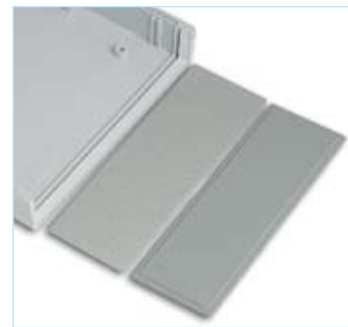
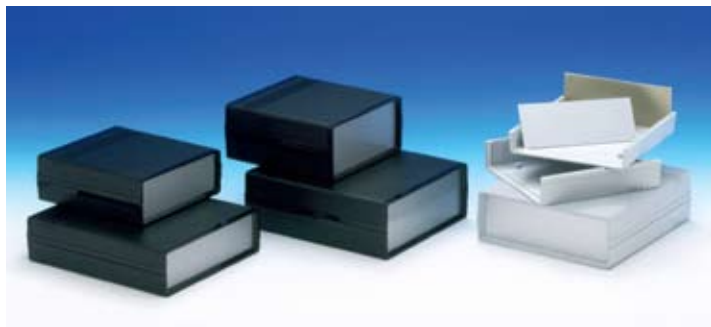


DESIGN

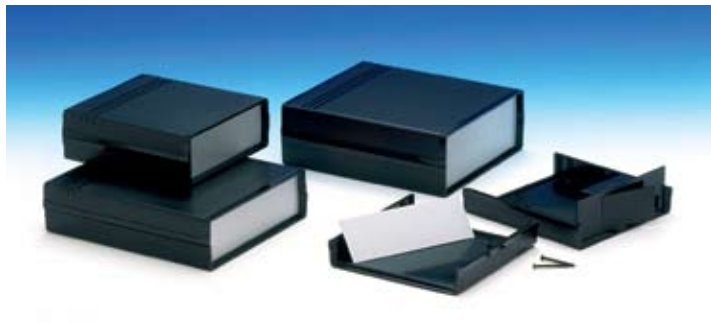
ABS enclosures with two 1 mm aluminium panels. Each half-shell has integral PCB guides and mounting studs. Matt surface finishing, available with two ABS horizontal PCB guides (Eurocard 100 x 160 mm). Closing by only two screws.

Part-No		Ext. Dimensions			Material	Max PCB Size				Accessories
Light gray RAL 9018	Black RAL 9004	L	W	H		L	W			
931-C.5	931-C.9	178	131,5	36	ABS	158	116	2	-	-
932-C.5	932-C.9	178	131,5	54	ABS	158	116	2	-	-
933-C.5	933-C.9	178	131,5	72	ABS	158	116	2	-	-

CAB

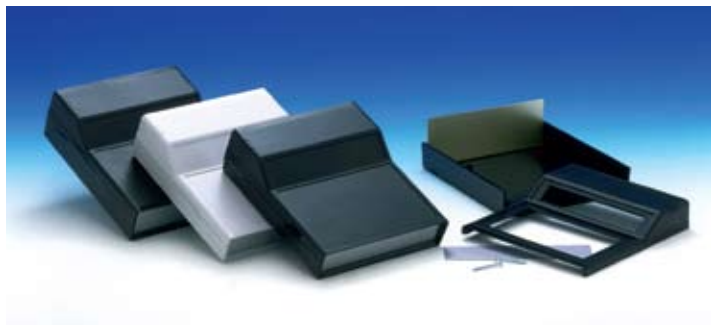


CAB-B

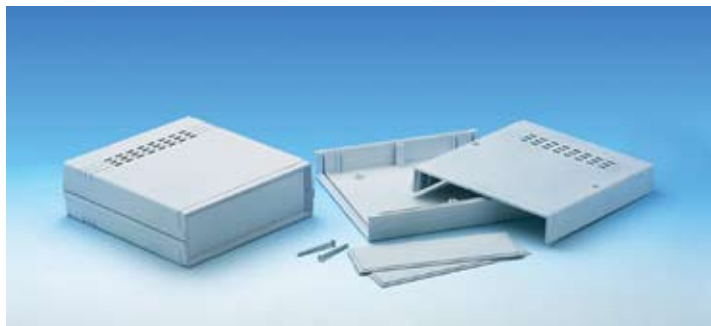


Mod. 011-B

CAB PULPIT



CAB-V0



DESIGN

ABS enclosures with two 1 mm aluminium panels. Each half-shell has integral PCB guides and mounting studs. Matt surface finishing. The model with "-B" have a 9V battery compartment in the rear panel. The models "242" and "243" have a 45° inclined display area. The models "242/O" and "243/O" have two cutouts in the recessed areas. The model "CAB-V0" is moulded in V0-flame retardant ABS. Closing by only two screws. Upon request dark gray ABS panels (Mod. PP11, PP12, PP22, PP222, PP223, PP233). Dual miniature clip for 9V battery (AB9).

DESIGNER DESIGNER-B

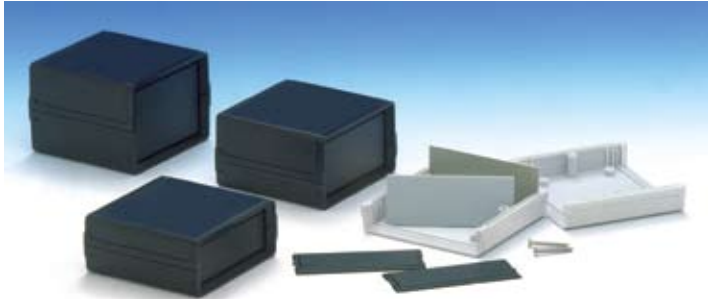


Mod. 10002-B

DESIGN

ABS enclosures with two 1 mm aluminium panels. Each half-shells has mounting studs. The models with “-B” have a 9V battery compartment with snap-on lid. Matt surface finishing. Closing by only two screws. Upon request ABS panels (Mod. PPD1, PPD2, PPD3).

MINI CAB



Mod. AP-11

DESIGN

A small Polystyrene enclosure with a front and rear panel. Each half-shell has integral PCB guides and mounting studs. Matt surface finishing. Closing by only two screws. Upon request aluminium panels (Mod. AP11, AP12, AP22).

	Part-No		Ext. Dimensions			Material	Max PCB Size				Accessories
	Light gray RAL 9018	Black RAL 9004	L	W	H		L	W			
CAB	011.5	011.9	134	129	47	ABS	116	115	2	-	PP11
	012.5	012.9	134	129	54	ABS	116	115	2	-	PP12
	022.5	022.9	134	129	61	ABS	116	115	2	-	PP22
	222.5	222.9	173	154	47	ABS	154	140	2	-	PP222
	223.5	223.9	173	154	54	ABS	154	140	2	-	PP223
	233.5	233.9	173	154	61	ABS	154	140	2	-	PP233
CAB B	011-B.5	011-B.9	134	129	47	ABS	116	115	2	1 x 9V	PP11
	012-B.5	012-B.9	134	129	54	ABS	116	115	2	1 x 9V	PP12
	022-B.5	022-B.9	134	129	61	ABS	116	115	2	1 x 9V	PP22
	222-B.5	222-B.9	173	154	47	ABS	154	140	2	1 x 9V	PP222
	223-B.5	223-B.9	173	154	54	ABS	154	140	2	1 x 9V	PP223
	233-B.5	233-B.9	173	154	61	ABS	154	140	2	1 x 9V	PP233
CAB PULPIT	242.5	242.9	173	154	54	ABS	154	140	2	-	PP223
	242/O.5	242/O.9	173	154	54	ABS	154	140	2	-	PP223
	242-B.5	242-B.9	173	154	54	ABS	154	140	2	1 x 9V	PP223
	243.5	243.9	173	154	61	ABS	154	140	2	-	PP233
	243/O.5	243/O.9	173	154	61	ABS	154	140	2	-	PP233
	243-B.5	243-B.9	173	154	61	ABS	154	140	2	1 x 9V	PP233
DESIGNER	10001.5	10001.9	145	85	37	ABS	126	72	2	-	PPD1
	10002.5	10002.9	145	85	49	ABS	126	72	2	-	PPD2
	10003.5	10003.9	145	85	61	ABS	126	72	2	-	PPD3
	10002-B.5	10002-B.9	145	85	49	ABS	126	72	2	1 x 9V	PPD2
	10003-B.5	10003-B.9	145	85	61	ABS	126	72	2	1 x 9V	PPD3
	White RAL 9003										
	CAB-V0.3		134	129	47	ABS	116	115	2	-	-

	Part-No		Ext. Dimensions			Material	Max PCB Size				Accessories
	White RAL 9002	Black RAL 9004	L	W	H		L	W			
MINICAB	MC11.7	MC11.9	85	80	36	Ps	72	62	2	-	AP11
	MC12.7	MC12.9	85	80	48	Ps	72	62	2	-	AP12
	MC22.7	MC22.9	85	80	60	Ps	72	62	2	-	AP22



This range of enclosures is attractively styled and especially designed for use as a "hand-held" instrument enclosure. Case parts are assembled by 2/4 self-tapping screws. The enclosures have a recessed area which is suitable for membrane keyboards controls or aluminium panels. The series TENCLOS and ENCLOS are also available without aluminium panels.

Applications: • alarm and security systems • industrial test equipments • mobile and data recording • computer interface • audio and video controls.

HS



2H



DESIGN

Hand-held enclosures are moulded in polycarbonate and consist of two halves closed by four stainless steel screws. The cover has a recessed area suitable for a membrane keypad. Ten models available. The version "W" has a front and a rear panel, the version "B" has a compartment for four battery 1.5V. The models with "K" are available with a sealing kit for IP65 protection.

	Part-No		Ext. Dimensions			Material	Max PCB Size				Accessories
	White	-	L	W	H		L	W			
HS	RAL 9002	-							4	-	-
	HS.3	-	200	100	44.5	Pc	-	-	4	-	-
	HS-B.3	-	200	100	44.5	Pc	-	-	4	4 x AA	-
	HSK.3	-	200	100	44.5	Pc	-	-	4	-	-
	HSK-B.3	-	200	100	44.5	Pc	-	-	4	4 x AA	-
	HSW.3	-	200	100	44.5	Pc	-	-	4	-	-
2H	HSW-B.3	-	200	100	44.5	Pc	-	-	4	4 x AA	-
	2H.3	-	160	100	35	Pc	-	-	4	-	-
	2H-B.3	-	160	100	35	Pc	-	-	4	4 x AA	-
	2HK.3	-	160	100	35	Pc	-	-	4	-	-
	2HK-B.3	-	160	100	35	Pc	-	-	4	4 x AA	-

ENCLOS ENCLOS-B



DESIGN

ABS enclosures with a recessed area to allow a 0.5 mm anodised aluminium panel. Base and cover have integral PCB mounting studs. The models with "B" have 9V battery compartment with snap-on cover. Matt surface finishing. Closing by four screws.

Upon request ABS mounting tabs (Mod. MT1).

SMART



DESIGN

High impact polystyrene enclosures with rounded corners. Easy assembly. Matt surfaces finishing. The models "E" have mounting ears. Closing by two or four screws.

	Part-No		Ext. Dimensions			Material	Max PCB Size				Accessories
	White RAL 9002	Black RAL 9004	L	W	H		L	W			
ENCLOS		1111.9	85	72,5	25	ABS	76	62,5	4	-	MT1
		1122.9	85	72,5	30,5	ABS	76	62,5	4	-	MT1
		2211.9	85	72,5	30,5	ABS	76	62,5	4	-	MT1
		2222.9	85	72,5	36	ABS	76	62,5	4	-	MT1
		2211-B.9	85	72,5	30,5	ABS	76	30	4	1 x 9V	MT1
		2222-B.9	85	72,5	36	ABS	76	30	4	1 x 9V	MT1
SMART	SR01.7 *	SR01.9 *	57	38	20	Ps	50	31	2	-	-
	SR01-E.7 *	SR01-E.9 *	57	38	20	Ps	50	31	2	-	-
	SR22.7	SR22.9	76	63,5	26	Ps	67,6	55,1	4	-	-
	SR22-E.7	SR22-E.9	76	63,5	26	Ps	67,6	55,1	4	-	-
	SR23.7	SR23.9	76	63,5	41	Ps	67,6	55,1	4	-	-
	SR23-E.7	SR23-E.9	76	63,5	41	Ps	67,6	55,1	4	-	-
	SR33.7	SR33.9	128	64	26	Ps	120,3	56,4	4	-	-
	SR33-E.7	SR33-E.9	128	64	26	Ps	120,3	56,4	4	-	-
	SR34.7	SR34.9	128	64	41	Ps	120,3	56,4	4	-	-
	SR34-E.7	SR34-E.9	128	64	41	Ps	120,3	56,4	4	-	-
	SR75.7	SR75.9	111,1	111,1	18,2	Ps	103,5	103,5	4	-	-
	SR75-E.7	SR75-E.9	111,1	111,1	18,2	Ps	103,5	103,5	4	-	-
	SR120.7	SR120.9	111,1	111,1	31	Ps	103,5	103,5	4	-	-
	SR120-E.7	SR120-E.9	111,1	111,1	31	Ps	103,5	103,5	4	-	-
SR170.7	SR170.9	111,1	111,1	43,4	Ps	103,5	103,5	4	-	-	
SR170-E.7	SR170-E.9	111,1	111,1	43,4	Ps	103,5	103,5	4	-	-	



Acc. MT1

TENCLOS-B



Mod. 780-B

TENCLOS F / F-B



Mod. 660F-B

DESIGN

ABS enclosures with a recessed area to allow an 0.5 mm anodised aluminium panel. Base and cover have integral PCB mounting studs. The models with "B" have 9V battery compartment with snap-on cover. Matt surface finishing. Closing by four screws. The models with "F" and "F-B" have neither aluminium panel nor recessed area.

Upon request ABS mounting tabs (Mod. MT1), Keypad membrane "M", "M58", "M59" and "MW" (with transparent display area).

	Part-No		Ext. Dimensions			Material	Max PCB Size				Accessories
	Light gray RAL 9018	Black RAL 9004	L	W	H		L	W			
TENCLOS • TENCLOS-B	550.5	550.9	145	85	25	ABS	135,2	75,2	4	-	MT1, APTB, M, MW, M58, M59
	560.5	560.9	145	85	31	ABS	135,2	75,2	4	-	MT1, APTB, M, MW, M58, M59
	660.5	660.9	145	85	37	ABS	135,2	75,2	4	-	MT1, APTB, M, MW, M58, M59
	750.5	750.9	145	85	49	ABS	135,2	75,2	4	-	MT1, APTB, M, MW, M58, M59
	760.5	760.9	145	85	55	ABS	135,2	75,2	4	-	MT1, APTB, M, MW, M58, M59
	770.5	770.9	145	85	73	ABS	135,2	75,2	4	-	MT1, APTB, M, MW, M58, M59
	780-B.5	780-B.9	145	85	31	ABS	97,6	75,2	4	1 x 9V	AB9, APTB, M, MW, M58, M59
	880-B.5	880-B.9	145	85	37	ABS	97,6	75,2	4	1 x 9V	AB9, APTB, M, MW, M58, M59
980-B.5	980-B.9	145	85	55	ABS	97,6	75,2	4	1 x 9V	AB9, APTB, M, MW, M58, M59	
TENCLOS -F- FB	450F.5	450F.9	145	85	17	ABS	135,2	75,2	4	-	MT1, M, MW, M58, M59
	550F.5	550F.9	145	85	21	ABS	135,2	75,2	4	-	MT1, M, MW, M58, M59
	660F.5	660F.9	145	85	27	ABS	135,2	75,2	4	-	MT1, M, MW, M58, M59
	770F.5	770F.9	145	85	45	ABS	135,2	75,2	4	-	MT1, M, MW, M58, M59
	660F-B.5	660F-B.9	145	85	27	ABS	97,6	75,2	4	1 x 9V	AB9, M, MW, M58, M59

TENCLOS SLANT



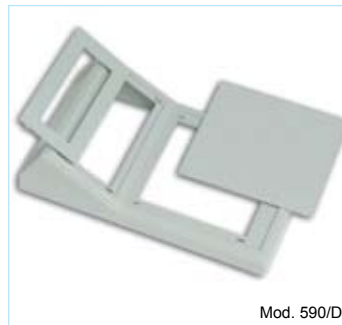
Mod. 660 S-B

TENCLOS SLOPE



Mod. 660 SP-B

TENCLOS PULPIT / -B



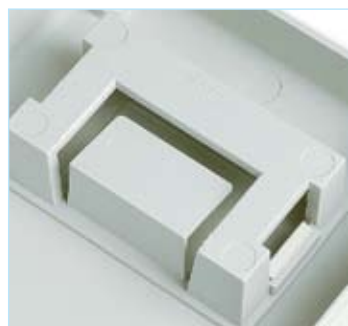
Mod. 590/D

Mod. 590

DESIGN

ABS enclosures with inclined cover. Matt surfaces finishing. The base has integral PCB mounting studs. The models with "B" have a 9V battery compartment with snap-on cover. The models with "D" have plastic punch-out lids for display (55 x 20 mm). Closing by four screws. Upon request ABS mounting tabs (Mod. MT1), Anodised aluminium panel (Mod. APTB).

	Part-No		Ext. Dimensions			Material	Max PCB Size				Accessories
	Light gray RAL 9018	Black RAL 9004	L	W	H		L	W			
SLANT	450S.5	450S.9	145	85	27,5	ABS	135,2	75,2	4	-	MT1, APTB
	550S.5	550S.9	145	85	31,5	ABS	135,2	75,2	4	-	MT1, APTB
	660S.5	660S.9	145	85	37,5	ABS	135,2	75,2	4	-	MT1, APTB
	770S.5	770S.9	145	85	55,5	ABS	135,2	75,2	4	-	MT1, APTB
	660S-B.5	660S-B.9	145	85	37,5	ABS	97,6	75,2	4	1 x 9V	AB9, APTB
SLOPE	450SP.5	450SP.9	145	85	27,5	ABS	135,2	75,2	4	-	MT1, APTB
	550SP.5	550SP.9	145	85	31,5	ABS	135,2	75,2	4	-	MT1, APTB
	660SP.5	660SP.9	145	85	37,5	ABS	135,2	75,2	4	-	MT1, APTB
	770SP.5	770SP.9	145	85	55,5	ABS	135,2	75,2	4	-	MT1, APTB
	660SP-B.5	660SP-B.9	145	85	37,5	ABS	97,6	75,2	4	1 x 9V	AB9, APTB
PULPIT - PULPIT B	590.5	590.9	145	85	49	ABS	135,2	75,2	4	-	MT1
	690.5	690.9	145	85	55	ABS	135,2	75,2	4	-	MT1
	790.5	790.9	145	85	73	ABS	135,2	75,2	4	-	MT1
	590/D.5	590/D.9	145	85	49	ABS	135,2	75,2	4	-	MT1
	690/D.5	690/D.9	145	85	55	ABS	135,2	75,2	4	-	MT1
	790/D.5	790/D.9	145	85	73	ABS	135,2	75,2	4	-	MT1
	680-B.5	680-B.9	145	85	55	ABS	97,6	75,2	4	1 x 9V	AB9
	680D-B.5	680D-B.9	145	85	55	ABS	97,6	75,2	4	1 x 9V	AB9



DESIGN

Polystyrene enclosures with a recessed area suitable for a membrane keypad. The base has integral PCB mounting studs. The models with "B" have a battery compartment. The "S" version has a slanted cover. Matt surface finishing. Closing by four screws.

	Part-No		Ext. Dimensions			Material	Max PCB Size				Accessories
	White RAL 9002	Black RAL 9004	L	W	H		L	W			
SMILE	SM1.7	SM1.9	160	95	30	Ps	151,1	86,1	4	-	
	SM2.7	SM2.9	160	95	35,5	Ps	151,1	86,1	4	-	
	SM1S.7	SM1S.9	160	95	30	Ps	151,1	86,1	4	-	
	SM2S.7	SM2S.9	160	95	35,5	Ps	151,1	86,1	4	-	
	SM-B.7	SM-B.9	160	95	35,5	Ps	96,5	86	4	1 x 9V	AB9
	SMS-B.7	SMS-B.9	160	95	35,5	Ps	96,5	86	4	1 x 9V	AB9
	SM2-2B.7	SM2-2B.9	160	95	35,5	Ps	96,5	86	4	2 x AA	
	SMS-2B.7	SMS-2B.9	160	95	35,5	Ps	96,5	86	4	2 x AA	
	SM2-4B.7	SM2-4B.9	160	95	35,5	Ps	86	66,5	4	4 x AA	
	SMS-4B.7	SMS-4B.9	160	95	35,5	Ps	86	66,5	4	4 x AA	



DESIGN

Ergonomic pocket ABS enclosures with a recessed area suitable for a membrane keypad. Four models available. The base has integral PCB mounting studs. The models with "B" have a battery compartment with a sliding lid. The "P" version has an ABS front panel. Matt surface finishing. Closing by four screws. Upon request plastic belt clip (Mod. "CLY").

	Part-No		Ext. Dimensions			Material	Max PCB Size				Accessories
	White RAL 9002	Black RAL 9004	L	W	H		L	W			
HANDY	HY.7	HY.9	104	71,8	25,4	ABS	94	58	4	-	CLY
	HY-B.7	HY-B.9	104	71,8	25,4	ABS	94	58	4	2 x AA / 1 x 9V	CLY
	HYP.7	HYP.9	104	71,8	25,4	ABS	94	58	4	-	CLY
	HYP-B.7	HYP-B.9	104	71,8	25,4	ABS	94	58	4	2 x AA / 1 x 9V	CLY

MINI TK



DESIGN

Compact ABS enclosures with a 1.8 mm recessed area suitable for a keypad membrane or an aluminium panel. Base and cover have integral PCB mounting studs. The model "TK-S" has inclined cover. Matt surface finishing. Closing by four screws. Upon request ABS mounting tabs ("MT2"), Keypad membrane "M53".

	Part-No		Ext. Dimensions			Material	Max PCB Size				Accessories
	White RAL 9002	Black RAL 9004	L	W	H		L	W			
	TK-F.7	TK-F.9	130	100	34,2	ABS	122	92	4	-	MT2, M53
	TK-S.7	TK-S.9	130	100	50	ABS	122	92	4	-	MT2, M53

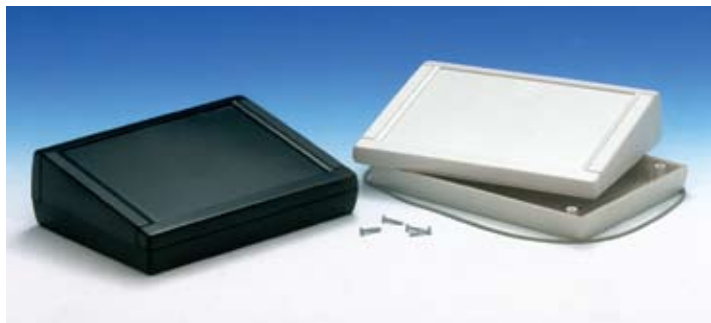


Mod. TK11



Acc. MT2

TK SP



Mod. TK11SP



Mod. TKK11SP

TK S



Mod. TK11S



Mod. TKK11S

DESIGN

ABS enclosures with a 1.8 mm recessed area suitable for a keypad membrane or an aluminium panel. Base and cover have integral PCB guides (Eurocard 100 x 160 mm) and mounting studs. Matt surface finishing. The models with "KK" have an IP65 sealing kit. Closing by four screws. Upon request aluminium panel (Mod. "APTK"), ABS wall mounting tabs (Mod. "MT2").

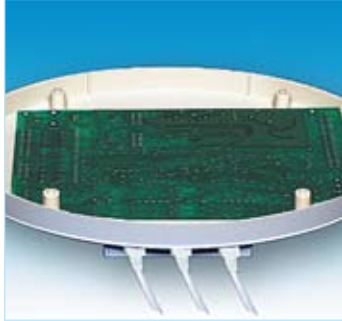
	Part-No		Ext. Dimensions			Material	Max PCB Size				Accessories
	White	Black	L	W	H		L	W			
	RAL 9002	RAL 9004									
TK	TK11.7	TK11.9	188,5	133,5	39,5	ABS	176	119	4	-	MT2, APTK
	TKK11.7	TKK11.9	188,5	133,5	39,5	ABS	176	119	4	-	MT2, APTK
	TK22.7	TK22.9	188,5	133,5	55,5	ABS	176	119	4	-	MT2, APTK
	TKK22.7	TKK22.9	188,5	133,5	55,5	ABS	176	119	4	-	MT2, APTK
	TK33.7	TK33.9	188,5	133,5	59	ABS	176	119	4	-	MT2, APTK
	TKK33.7	TKK33.9	188,5	133,5	59	ABS	176	119	4	-	MT2, APTK
	TK44.7	TK44.9	188,5	133,5	75,5	ABS	176	119	4	-	MT2, APTK
SP	TKK44.7	TKK44.9	188,5	133,5	75,5	ABS	176	119	4	-	MT2, APTK
	TK11SP.7	TK11SP.9	188,5	133,5	56,5	ABS	176	119	4	-	MT2, APTK
	TKK11SP.7	TKK11SP.9	188,5	133,5	56,5	ABS	176	119	4	-	MT2, APTK
	TK33SP.7	TK33SP.9	188,5	133,5	76,5	ABS	176	119	4	-	MT2, APTK
S	TKK33SP.7	TKK33SP.9	188,5	133,5	76,5	ABS	176	119	4	-	MT2, APTK
	TK11S.7	TK11S.9	188,5	133,5	56,5	ABS	176	119	4	-	MT2, APTK
	TKK11S.7	TKK11S.9	188,5	133,5	56,5	ABS	176	119	4	-	MT2, APTK
	TK33S.7	TK33S.9	188,5	133,5	75,8	ABS	176	119	4	-	MT2, APTK
	TKK33S.7	TKK33S.9	188,5	133,5	75,8	ABS	176	119	4	-	MT2, APTK



Mod. DOMO1



Mod. DOMO2



Acc. MT4



DESIGN

Ergonomically shaped ABS enclosures, ideal for desktop and wall mounting applications. The model "DOMO2" has on the cover a recessed area suitable for a keypad membrane or 5,4" TFT display. Base and cover have integral PCB mounting studs. Rear plastic panel for easy cables and connectors access. Matt surface finishing. Closing by four screws. Upon request wall-suspension element "MT4.0".

OVOTEK



Mod. OK1-B.7

Mod. OK1-B.7

Mod. OK1-B2.7



DESIGN

Ergonomically shaped ABS enclosures, especially designed for use as hand-held instruments enclosures. The Model "OK-2" has on the cover a recessed area suitable for a keypad membrane or a wide screen 4,3 " TFT Display. The models with "B" have a battery compartment for two 1,5V (AA) or one 9V flat battery (PP3) while the models with "B2" have a battery compartment for four 1,5V (AA) or two 9V flat batteries (PP3). Matt surface finishing. Closing by four screws.

	Part-No		Ext. Dimensions			Material	Max PCB Size		Screws	Battery	Accessories
	White RAL 9002	Black RAL 9004	L	W	H		L	W			
DOMO	DOMO1.7	-	250	180	57,5	ABS	156/194	130/102	4	-	MT4
	DOMO2.7	-	250	180	53,5	ABS	156/194	130/102	4	-	MT4
OVOTEK	OK1.7	OK1.9	165,3	103,2	38,5	ABS	114	95	4	-	-
	OK1-B.7	OK1-B.9	165,3	103,2	38,5	ABS	114	95	4	2 x AA / 1 x 9V	AB9
	OK1-B2.7	OK1-B2.9	165,3	103,2	38,5	ABS	114	95	4	4 x AA / 2 x 9V	AB9
	OK2.7	OK2.9	165,3	103,2	38,5	ABS	114	95	4	-	-
	OK2-B.7	OK2-B.9	165,3	103,2	38,5	ABS	114	95	4	2 x AA / 1 x 9V	AB9
	OK2-B2.7	OK2-B2.9	165,3	103,2	38,5	ABS	114	95	4	4 x AA / 2 x 9V	AB9



DESIGN

ABS enclosure with matt surface finishing for wall mounting home automation applications. The model "MOK2" has a recessed area for keypad membrane or display. Base and cover have integral mounting studs for PCB. The bottom is manufactured in transparent Bayblend® and it is suitable for fixing on a standard flush mounting box. Snap-on closing. Available in off-white colour RAL 9002.

Part-No	Ext. Dimensions	Material	Max PCB Size		Screws	Battery	Accessories
			L	W			
White	-	ABS / ABS+PC	114	95	-	-	-
RAL 9002	-						
MOK1.7	165,3 103,2 20,3	ABS / ABS+PC	114	95	-	-	-
MOK2.7	165,3 103,2 18,2	ABS / ABS+PC	114	95	-	-	-

MINITK WALL



DESIGN

ABS enclosure with matt surface finish for wall mounting home automation applications. On front side, 1,8 mm recessed area for keypad membrane or display. Base and cover have integral mounting studs for PCB. The bottom is manufactured by transparent Bayblend® and it is suitable for fixing on a standard flush mounting box. Snap-on closing. Available in off-white colour RAL 9002. Upon request Keypad membrane "M53".

Part-No	Ext. Dimensions	Material	Max PCB Size		Screws	Battery	Accessories
			L	W			
White	-	ABS / ABS+PC	122	92	-	-	M53
RAL 9002	-						
MTK-F.7	131 100,5 17,6	ABS / ABS+PC	122	92	-	-	M53
MTK-S.7	131 100,5 33,6	ABS / ABS+PC	122	92	-	-	M53



The TEKBOX programme is attractively styled and especially designed for use as a "hand-held" instrument enclosures.

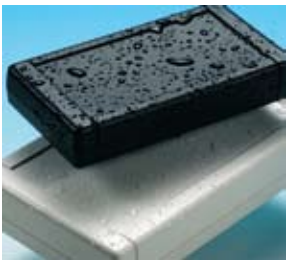
With integral battery compartment for two 1.5V mignon cells (AA) or one 9V flat battery.

ABS enclosures with a recessed operating area for membrane keyboards. Available sealing kit for IP65 protection.

Accessories: ABS wall mounting tabs, aluminium panel, keypads membranes.

Applications:

- Audio and video control
- Telecommunications
- Digital control systems
- Terminals for mobile data recording



TEKBOX



DESIGN

ABS enclosures with a recessed operating area 102 x 52 mm. for membrane keyboards. Base and cover have integral PCB guides and mounting studs. Matt surface finishing. Closing by four screws. Upon request ABS wall mounting tabs ("MT1"), Keypad membrane "M54" and "MW55".

	Part-No		Ext. Dimensions			Material	Max PCB Size				Accessories
	White RAL 9002	Black RAL 9004	L	W	H		L	W			
TB.7	TB.9		126	67,8	24,5	ABS	98	57	4	-	MT1, M54, MW55

TB-1 • TB-2



Mod. TB-1B

TBL-1 • TBL-2



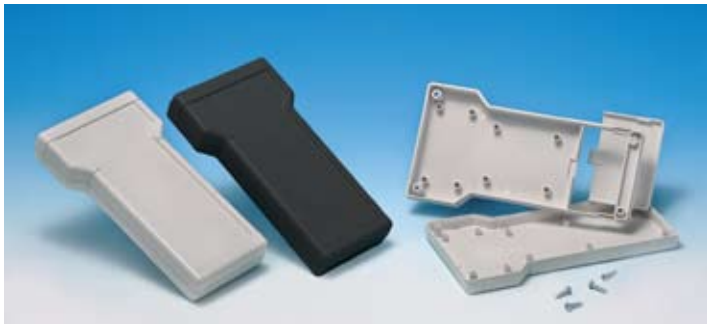
Mod. TBL-1B

DESIGN

ABS enclosures with a recessed operating area for membrane keyboards. Base and cover have integral PCB guides and mounting studs. Matt surface finishing. The models with “-B” have a battery compartment for two mignon-cells 1,5V (AA) or one flat battery 9V (PP3). The models with “K” are able to accept the IP65 sealing kit. Closing by four screws.

Upon request ABS wall mounting tabs (“MT1”), aluminium panels (“APTb”), Keypad membrane “M”, “M58”, “M59” and “MW” (with transparent display area).

TBT-B



DESIGN

ABS enclosures ergonomically designed for a comfortable fit into the user’s hand. Perfect for instrument or mobile data enclosures requiring a keypad and display. Base and cover have integral PCB guides and mounting studs. Matt surface finishing. Battery compartment with snap-on lid. Closing by four screws.

TBT-1 • TBT-2



Mod. TBT-1B

DESIGN

ABS enclosures with a recessed operating area for membrane keyboards. Base and cover have integral PCB guides and mounting studs. Matt surface finishing. The models with “B” have a battery compartment for two mignon-cells 1,5V (AA) or one flat battery 9V (PP3). The models with “K” are able to accept the IP65 sealing kit. Closing by four screws. Upon request Keypad membrane “M”, “M58”, “M59” and “MW”, “MW60” (with transparent display area).



Mod. TB-1SP



TB-1S • TB-1SB



Mod. TB-1S



Mod. TB-1SB

DESIGN

ABS enclosures with inclined cover and a recessed operating area 132 x 72 mm for membrane keyboards. Base and cover have integral PCB guides and mounting studs. Matt surface finishing. The model "TB-1SB" has a battery compartment for two mignon-cells 1,5V (AA) or one flat battery 9V (PP3). Closing by four screws. Upon request ABS wall mounting tabs "MT1", aluminium panel "APTB", Keypad membrane "M", "M58", "M59" and "MW" (with transparent display area).

	Part-No		Ext. Dimensions			Material	Max PCB Size				Accessories
	White RAL 9002	Black RAL 9004	L	W	H		L	W			
TB-1 • TB-2	TB-1.7	TB-1.9	160	94	25	ABS	149	80	4	-	MT1, APTB, M, MW, M58, M59
	TB-1K.7	TB-1K.9	160	94	25	ABS	149	80	4	-	MT1, APTB, M, MW, M58, M59
	TB-2.7	TB-2.9	160	94	31,5	ABS	149	80	4	-	MT1, APTB, M, MW, M58, M59
	TB-2K.7	TB-2K.9	160	94	31,5	ABS	149	80	4	-	MT1, APTB, M, MW, M58, M59
	TB-1B.7	TB-1B.9	160	94	25	ABS	98	80	4	2 x AA / 1 x 9V	MT1, APTB, AB9, M, MW, M58, M59
	TB-1BK.7	TB-1BK.9	160	94	25	ABS	98	80	4	2 x AA / 1 x 9V	MT1, APTB, AB9, M, MW, M58, M59
	TB-2B.7	TB-2B.9	160	94	31,5	ABS	98	80	4	2 x AA / 1 x 9V	MT1, APTB, AB9, M, MW, M58, M59
TBL-1 • TBL-2	TB-2BK.7	TB-2BK.9	160	94	31,5	ABS	98	80	4	2 x AA / 1 x 9V	MT1, APTB, AB9, M, MW, M58, M59
	TBL-1.7	TBL-1.9	200	94	25	ABS	190	83	4	-	MT1, MW61+ M, MW, M58, M59
	TBL-1K.7	TBL-1K.9	200	94	25	ABS	190	83	4	-	MT1, MW61+ M, MW, M58, M59
	TBL-2.7	TBL-2.9	200	94	31,5	ABS	190	83	4	-	MT1, MW61+ M, MW, M58, M59
	TBL-2K.7	TBL-2K.9	200	94	31,5	ABS	190	83	4	-	MT1, MW61+ M, MW, M58, M59
	TBL-1B.7	TBL-1B.9	200	94	25	ABS	140	80	4	2 x AA / 1 x 9V	MT1, AB9, MW61+ M, MW, M58, M59
	TBL-1BK.7	TBL-1BK.9	200	94	25	ABS	140	80	4	2 x AA / 1 x 9V	MT1, AB9, MW61+ M, MW, M58, M59
TBT-1 • TBT-2	TBL-2B.7	TBL-2B.9	200	94	31,5	ABS	140	80	4	2 x AA / 1 x 9V	MT1, AB9, MW61+ M, MW, M58, M59
	TBL-2BK.7	TBL-2BK.9	200	94	31,5	ABS	140	80	4	2 x AA / 1 x 9V	MT1, AB9, MW61+ M, MW, M58, M59
	TBT-B.7	TBT-B.9	163	88	25	ABS	110	79/59	4	2 x AA / 1 x 9V	AB9
	TBT-1.7	TBT-1.9	210	116	25	ABS	196	80/102	4	-	MT1, AB9, MW60+ M, MW, M58, M59
	TBT-1K.7	TBT-1K.9	210	116	25	ABS	196	80/102	4	-	MT1, AB9, MW60+ M, MW, M58, M59
	TBT-2.7	TBT-2.9	210	116	31,5	ABS	196	80/102	4	-	MT1, AB9, MW60+ M, MW, M58, M59
	TBT-2K.7	TBT-2K.9	210	116	31,5	ABS	196	80/102	4	-	MT1, AB9, MW60+ M, MW, M58, M59
SP • S	TBT-1B.7	TBT-1B.9	210	116	25	ABS	148,2	80/102	4	2 x AA / 1 x 9V	MT1, AB9, MW60+ M, MW, M58, M59
	TBT-1BK.7	TBT-1BK.9	210	116	25	ABS	148,2	80/102	4	2 x AA / 1 x 9V	MT1, AB9, MW60+ M, MW, M58, M59
	TBT-2B.7	TBT-2B.9	210	116	31,5	ABS	148,2	80/102	4	2 x AA / 1 x 9V	MT1, AB9, MW60+ M, MW, M58, M59
	TBT-2BK.7	TBT-2BK.9	210	116	31,5	ABS	148,2	80/102	4	2 x AA / 1 x 9V	MT1, AB9, MW60+ M, MW, M58, M59
	TB-1SP.7	TB-1SP.9	160	94	36,5	ABS	149	80	4	-	MT1, APTB
	TB-1S.7	TB-1S.9	160	94	36,5	ABS	149	80	4	-	MT1, APTB, M, MW, M58, M59
	TB-1SB.7	TB-1SB.9	160	94	36,5	ABS	98	80	4	2 x AA / 1 x 9V	MT1, APTB, M, MW, M58, M59, AB9



TEKO are pleased to introduce a new generation of hand-held enclosures, utilising multi-shot moulding technology which allows the new design to combine comfort and functionality, as the TEKNET series of enclosures provide elastomer grips (TPU) on the sides of the ergonomically designed range.

Recessed operating area for the protection of the membrane key board, aluminium panel and display.

Battery compartment for two mignon cells 1,5 V (AA) or 9V flat battery (PP3) and for four mignon cells 1,5 V (AA) or two 9V flat battery (PP3) available .

Eighth models available.

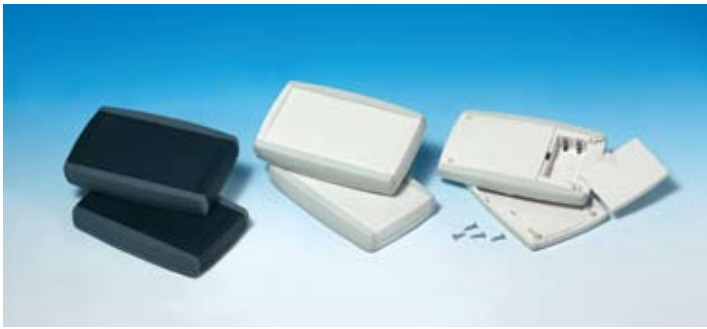
Accessories: mounting tabs, aluminium panel, switch membranes.

Applications:

- Measuring equipment
- Computer interfaces
- Wellness
- Telecommunications
- Home automation
- Medical and laboratory technologies
- Terminals for mobile data recording



TEKNET



DESIGN

ABS enclosures with new soft-touch contoured shape. By utilising multi-shot moulding technique, Teknet features an ergonomic design of elastomer grips (TPU) on the side of the case. The models with "B" have a battery compartment for two 1.5V mignon-cells (AA) or one 9V flat battery (PP3). The models with "B2" have a battery compartment for four mignon cells 1,5V (AA) or two flat batteries 9V (PP3). Matt surface finishing. Closing by four screws. Upon request aluminium panel (Mod."APTb"), Keypad membrane "M", "M58", "M59" or "MW" (with transparent display area).

Part-No		Ext. Dimensions			Material	Max PCB Size		Screws	Battery	Accessories
Black / Dark Grey RAL 9004 / RAL 7012	White / Light Grey RAL 9002 / RAL 9018	L	W	H		L	W			
TN11.29	TN11.30	155	96	20,2	ABS+TPU	138	77	4	-	M, M58, M59, MW
TN12.29	TN12.30	155	96	24,2	ABS+TPU	138	77	4	-	M, M58, M59, MW
TN22.29	TN22.30	155	96	28,2	ABS+TPU	138	77	4	-	M, M58, M59, MW
TN21-B.29	TN21-B.30	155	96	24,2	ABS+TPU	95	77	4	2 x AA / 1 x 9V	M, M58, M59, MW, AB9
TN22-B.29	TN22-B.30	155	96	28,2	ABS+TPU	95	77	4	2 x AA / 1 x 9V	M, M58, M59, MW, AB9
TN21-B2.29	TN21-B2.30	155	96	24,2	ABS+TPU	81	59	4	4 x AA / 2 x 9V	M, M58, M59, MW, AB9
TN22-B2.29	TN22-B2.30	155	96	28,2	ABS+TPU	81	59	4	4 x AA / 2 x 9V	M, M58, M59, MW, AB9
TNP21.29	TNP21.30	150	96	46	ABS + TPU	138	77	4	-	-
TNP22.29	TNP22.30	150	96	50	ABS + TPU	138	77	4	-	-
TNP22-B.29	TNP22-B.30	150	96	50	ABS + TPU	98	77	4	2 x AA / 1 x 9V	AB9
TNP22-B2.29	TNP22-B2.30	150	96	50	ABS + TPU	81	59	4	4 x AA / 2 x 9V	AB9

MINITEKNET



DESIGN

ABS enclosure with new soft-touch contoured shape. By utilising multi-shot moulding technology, the MINITEKNET features an ergonomic design of elastomer grips (TPU) on the side of the case. Battery compartment for two 1,5V (AA) mignon cells or one 9V flat battery (PP3). Base and cover have integral PCB mounting studs. Matt surface finishing. Closing by four screws. Upon request Keypad membrane "M56" or "MW57" (with transparent display area).

Part-No		Ext. Dimensions			Material	Max PCB Size		Screws	Battery	Accessories
Black / Dark Grey RAL 9004 / RAL 7012	White / Light Grey RAL 9002 / RAL 9018	L	W	H		L	W			
MTN01-B.29	MTN01-B.30	115	70	24	ABS+TPU	60	48	4	2 x AA / 1 x 9V	AB9, M56, MW57



The SPRINT series is attractively styled and especially designed for use as a "hand-held" instrument enclosures.

Base has integrated PCB mounting studs. Models available with front opening for Smart-Card readers.

Applications:

- Medical technology
- Smart-Card reading
- Wellness
- Security systems
- Terminals for mobile data recording and data transfer



SPRINT



Mod. ST1



Mod. ST1-C2



Mod. ST1-C2



Acc. BH-1



Acc. CLP

DESIGN

Ergonomic designed ABS enclosures. Pillars prepared for mounting PCBs in the base. Two models available. The model "ST1-C2" is specially designed for Smart Card readers with rear cutout (30mm X 11mm) for DB9 connector. Matt surface finishing. Closing by two screws.

	Part-No		Ext. Dimensions			Material	Max PCB Size				Accessories
	Dark gray RAL 7016	White RAL 9002	L	W	H		L	W			
ST1.4	ST1.7		114	74	24,7	ABS	100,5	53,5	2	-	-
ST1-C2.4	ST1-C2.7		114	74	24,7	ABS	100,5	53,5	2	-	-



This range of enclosures is attractively styled and especially designed for use as a compact instrument enclosure. They are available with either push buttons, a clear display window or a solid cover.

Applications: alarm and security systems • industrial test equipment • receivers • transmitters • telecommunications • pocket modems • audio and video controls • computer interface.

SOAP



Mod. 10006/1



Mod. 10014

DESIGN

ABS enclosures with rounded corners, convenient to carry and snaps together for easy assembly. Base and cover have integral PCB mounting studs. The enclosures "10006/1" and "10006/2" are available with one or two cutouts for connectors or cables (14,7 x 12,5 mm). Matt surface finishing. Only the model "10014" is available in black or white.

Part-No		Ext. Dimensions			Material	Max PCB Size				Accessories
Light gray RAL 9018	Black RAL 9004	L	W	H		L	W			
10006.5 *	10006.9 *	56	31	24	ABS	37	25	-	-	-
10006/1.5 *	10006/1.9 *	56	31	24	ABS	37	25	-	-	-
10006/2.5 *	10006/2.9 *	56	31	24	ABS	37	25	-	-	-
10007.5 *	10007.9 *	80	56	24,5	ABS	65	49,5	-	-	-
10008.5 *	10008.9 *	131	65	30,5	ABS	117	58	-	-	-
White RAL 9002	Black RAL 9004									
10014.7 *	10014.9 *	90	46	17,5	ABS	83	39	-	-	-



DESIGN

ABS enclosures with rounded corners. Base and cover have integral PCB mounting studs. The models "10011", "10012-B" and "10013-B" have a closing by one screw. The model "10012-B" has a 9V battery compartment. The model "10013-B" has a compartment for two 9V batteries. Matt surface finishing.

Part-No	Ext. Dimensions			Material	Max PCB Size		Screw	Battery	Accessories				
	Black RAL 9004	-	-		L	W				H	L	W	
10010.9 *				ABS	58	35	16	ABS	54,6	31,6	-	-	-
10011.9 *				ABS	90	56	22	ABS	75,5	49	1	-	-
10015.9 *				ABS	78	39	23	ABS	70	31,5	-	-	-
10012-B.9				ABS	99,5	60	30	ABS	54,5	51,5	1	1 x 9V	AB9
10013-B.9				ABS	109	69,5	40	ABS	60,5	59,5	1	1 x 9V / 2 x 9V	AB9

POCKET CARD

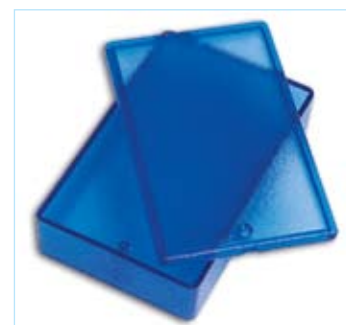


DESIGN

ABS enclosures with a innovative design. The top cover has a recessed operating area for membrane keyboards. Space for 3V small round cells. Four versions available: basic (PC), opening for flat cable (PC-1), LED front opening (PC-XIR) and opening for flat cable plus LED (PC-IR). Closing by only one screw.

Part-No	Ext. Dimensions			Material	Max PCB Size		Screw	Battery	Accessories				
	Dark gray RAL 7016	White 9002	-		L	W				H	L	W	
PC.4 *				ABS	85	54	10	ABS	79,5	49,6	1	-	-
PC-1.4 *				ABS	85	54	10	ABS	79,5	49,6	1	-	-
PC-IR.4 *				ABS	85	54	10	ABS	79,5	49,6	1	-	-
PC-XIR.4 *				ABS	85	54	10	ABS	79,5	49,6	1	-	-

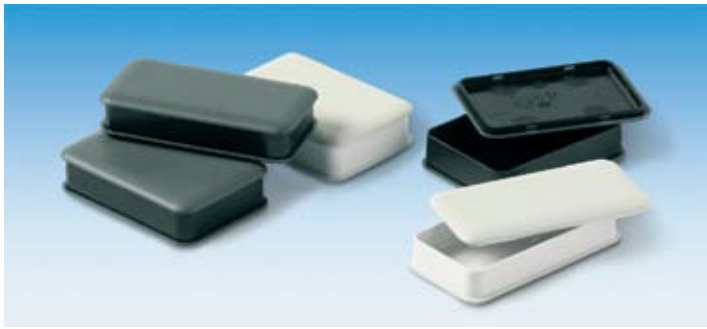
10016



DESIGN

ABS enclosures with rounded corners. Base and cover have integral PCB mounting studs. They are moulded in white and transparent blue. Matt surface finishing. Closing by one screw.

Part-No	Ext. Dimensions			Material	Max PCB Size		Screw	Battery	Accessories				
	White RAL 9002	Transparent blue -	-		L	W				H	L	W	
10016.7 *				ABS	90,6	57,2	23,8	ABS	76	49,7	1	-	-



WITEK RING colours



RWK-3.39



RWK-2.38



Machined RWK-2.4

DESIGN

Series of enclosures moulded in two-materials (ABS/PC and TPU) with snap-on closing. Base with integral mounting studs for PCB. Two combinations of colours available: Black RAL 9004/Dark grey RAL 7012 - White RAL 9002/Light grey RAL 9018. Rings "RWK-2" and "RWK-3" available on request.

Part-No		Ext. Dimensions			Material	Max PCB Size		Screws	Battery	Accessories
Black / Dark Grey RAL 9004 / RAL 7012	White / Light Grey RAL 9002 / RAL 9018	L	W	H		L	W			
WK-2.29	WK-2.30	80	56	22	ABS/PC +TPU	73	48	-	-	RWK-2
WK-3.29	WK-3.30	90	46	20	ABS/PC +TPU	82	38	-	-	RWK-3

OV-IP



Custom colours

DESIGN

Small enclosure with ergonomic design, moulded in two materials, using multi-shot injection. Four models available, from one to four push buttons figuration. Protection class up to IP 65. Base with integral PCB mounting studs. Closing by two screws. Two-colours combination: Grey RAL 7046/Black RAL 9004 . Applications: transmitters, personal security, home automation. AB2032 battery clip available on request.

Part-No		Ext. Dimensions			Material	Max PCB Size		Screws	Battery	Accessories
Dark Grey / Black RAL 7046 / RAL 9004	-	L	W	H		L	W			
OV-IP/0.36	-	56,8	44	14,5	PA6 + TPE	38	36	2	CR2032	AB2032
OV-IP/1.36	-	56,8	44	14,5	PA6 + TPE	38	36	2	CR2032	AB2032
OV-IP/2.36	-	56,8	44	14,5	PA6 + TPE	38	36	2	CR2032	AB2032
OV-IP/3.36	-	56,8	44	14,5	PA6 + TPE	38	36	2	CR2032	AB2032
OV-IP/4.36	-	56,8	44	14,5	PA6 + TPE	38	36	2	CR2032	AB2032

OVO-1



Custom.OVO-1

DESIGN

Ergonomic designed ABS enclosures with a recessed operating area for membrane keyboard. Matt surface finishing. Integrated supports for two 1.5V microcells (AAA). The model "OVO-1IR" has a front opening for a LED. Closing by two screws.

OVO-2



Acc. MT5

DESIGN

Ergonomic designed ABS enclosures with a recessed operating area for membrane keyboard. Matt surface finishing. Space for a 12V battery or small 3V round cells. The model "OVO-2IR" has a front opening for a LED. Closing by two screws. Wall mounting element (Mod. "MT5") available upon request. Upon request Keypad membrane "M50", "M51", "M52".

OVO-3



AB2032



Custom.OVO-3/3



Mod. OVO-3/3.5



Tampo



Laser Marking



OT3 Colors

DESIGN

Ergonomic designed ABS pocket enclosures with one, two or three push-buttons configuration. Space for round PCB (35 mm.) with button cells batteries. The model "OVO-3/0" has no buttons. Matt surface finishing. Simple interlocking assembly or by one screw. AB2032 battery clip available on request.

Part-No	Ext. Dimensions			Material	Max PCB Size		Screws	Batteries	Accessories		
	White RAL 9002	Black RAL 9004	L		W	H				L	W
OVO-1.7 • OVO-1IR.7	OVO-1.9 • OVO-1IR.9		124	66	23	ABS	65,5	57,3	2	2 x AAA	-
OVO-2.7 • OVO-2IR.7	OVO-2.9 • OVO-2IR.9		95,5	51	17,5	ABS	-	-	2	1x12V / 1x3V	MT5, M50, M51, M52
Dark gray RAL 7016	Light gray RAL 9018										
OVO-3/0.4	OVO-3/0.5		55	43,8	14,9	ABS	∅	34,4	1	CR2032	AB2032
OVO-3/1.4	OVO-3/1.5		55	43,8	14,9	ABS	∅	34,4	1	CR2032	AB2032
OVO-3/2.4	OVO-3/2.5		55	43,8	14,9	ABS	∅	34,4	1	CR2032	AB2032
OVO-3/3.4	OVO-3/3.5		55	43,8	14,9	ABS	∅	34,4	1	CR2032	AB2032

POCKET 10



DESIGN

ABS enclosures with rounded corners with one or two push-button configurations. The base has a integral PCB mounting studs. The enclosure is supplied with two metal contacts for 12V battery (Mod. "AB12"). Matt surface finishing. Closing by one screw.

POCKET 11



DESIGN

Ergonomic designed ABS enclosures available from one to six push-button configurations. The model "11120" has no buttons. The base has a integral PCB mounting studs. The enclosure is supplied with two metal contacts for 12V battery (Mod. "ABM"). Matt surface finishing. Closing either snap-on or by one screw.

POCKET 12



DESIGN

ABS enclosures with an innovative design. Three models available with one, two or three push-button configurations. The base has a integral PCB mounting studs. The enclosure is supplied with two metal contacts for 12V battery (Mod. "ABM"). Matt surface finishing. Closing by one screw.

	Part-No		Ext. Dimensions			Material	Max PCB Size				Accessories
	Dark gray RAL 7012	Black RAL 9004	L	W	H		L	W			
10	10120.2	10120.9	61	37	15	ABS	43	31,5	1	1 x 12V	-
	10120/2.2	10120/2.9	61	37	15	ABS	43	31,5	1	1 x 12V	-
	Dark gray RAL 7016	-									
11	11120.4	-	74,7	44,1	18,2	ABS	47	33,5	1	1 x 12V	-
	11121.4	-	74,7	44,1	18,2	ABS	47	33,5	1	1 x 12V	-
	11122.4	-	74,7	44,1	18,2	ABS	47	33,5	1	1 x 12V	-
	11123.4	-	74,7	44,1	18,2	ABS	47	33,5	1	1 x 12V	-
	11124.4	-	74,7	44,1	18,2	ABS	47	33,5	1	1 x 12V	-
	11125.4	-	74,7	44,1	18,2	ABS	47	33,5	1	1 x 12V	-
	11126.4	-	74,7	44,1	18,2	ABS	47	33,5	1	1 x 12V	-
	Black RAL 9004	-									
12	12121.9	-	56,5	35,5	13,5	ABS	-	-	1	1 x 12V	-
	12122.9	-	56,5	35,5	13,5	ABS	-	-	1	1 x 12V	-
	12123.9	-	56,5	35,5	13,5	ABS	-	-	1	1 x 12V	-



Mod. 10124



Mod. 10005-DW



Mod. 10005-B



Mod. 10124



Acc. CL1

RC



Mod. RC124



Mod. 10009-B



Mod. 10009A-B



Acc. CL1

DESIGN

ABS enclosures with rounded corners. 9V battery compartment with a snap sliding lid. The model "10124" have one, two and four blue push-buttons set. The model "RC124" have one, two and four yellow push-buttons set. The models "10005-DW1" and "10009A-B" have on the top a transparent window. The models "10005-B", "10005-DW1" and "10124" have a front IR-panel replaceable by a plastic panel coloured as the box. Matt surface finishing. Closing by only one screw. Upon request stainless steel clip (Mod. "CL1").

	Part-No		Ext. Dimensions			Material	Max PCB Size				Accessories
	Light gray RAL 9018	Black RAL 9004	L	W	H		L	W			
SNAP	10005-B.5	10005-B.9	82	60	25	ABS	52,5	35	1	1 x 9V	CL1
	10005-DW1.5	10005-DW1.9	82	60	25	ABS	52,5	35	1	1 x 9V	CL1
	10124.5	10124.9	82	60	25	ABS	52,5	35	1	1 x 9V	CL1
RC	10009-B.5	10009-B.9	107	60	24,5	ABS	63	52	1	1 x 9V	CL1
	10009A-B.5	10009A-B.9	107	60	24,5	ABS	63	52	1	1 x 9V	CL1
	RC124.5	RC124.9	107	60	24,5	ABS	63	52	1	1 x 9V	CL1

SQUID1



Mod. SQ1



Mod. SQ124+DW1



Mod. SQ11



Mod. SQ124



Mod. SQ124-IR

DESIGN

ABS enclosures with ergonomic design. The base and cover have integral PCB guides and mounting pillars. The base has a compartment with snap fit sliding door for housing either a single 9V battery (PP3) or two 1.5V batteries (AA). Available also a front panel permeable to infrared light (Mod. SQ1-IR and SQ124-IR). The model "SQ124" has one, two and four blue push buttons set. The models "SQ11" and "SQ11-IR" have a recessed area suitable for keypad membrane. Closing by three screws.

Upon request dual miniature clip for 9V battery (Mod. "AB9"), Self adhesive spacer for batteries (Mod. "DSA").

SQUID2



Mod. SQ2-IR

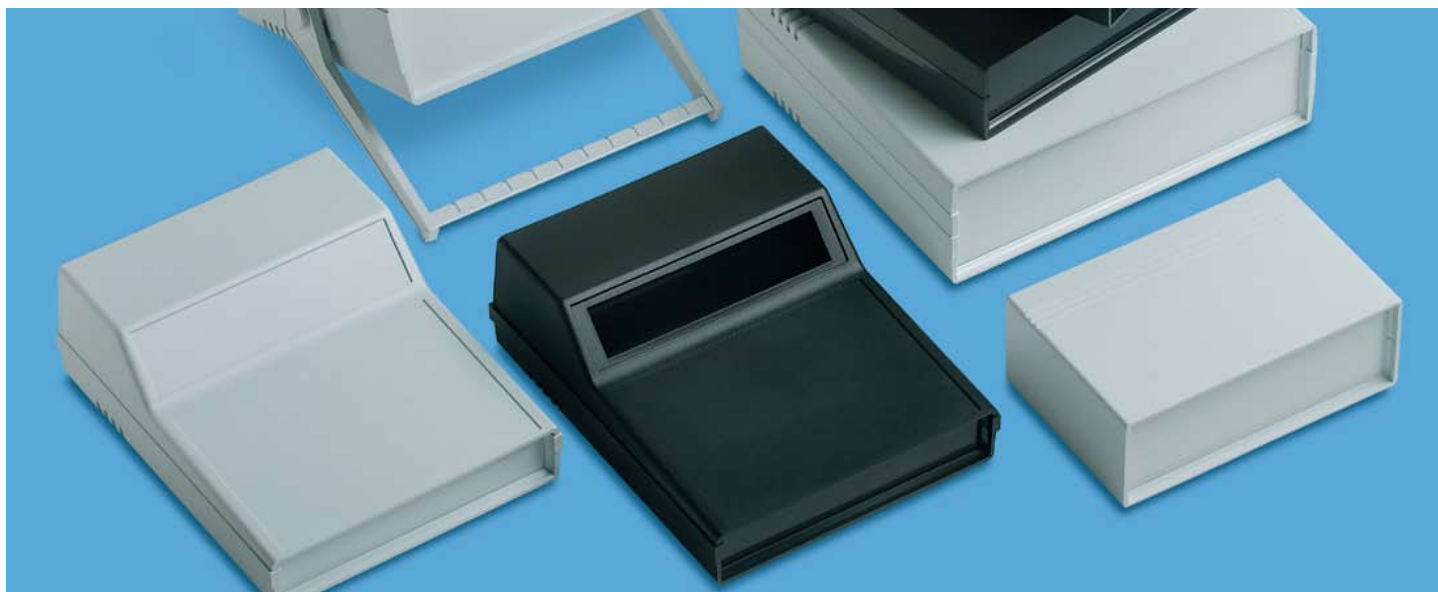


DESIGN

ABS enclosures with ergonomic design. The base and cover have integral PCB guides and mounting pillars. The base has a compartment with snap fit sliding door for housing either a single 9V battery (PP3) or two 1.5V batteries (AA). Available also a front panel permeable to infrared light (Mod. SQ2-IR). The models "SQ22" and "SQ22-IR" have a recessed area suitable for keypad membrane. Closing by three screws.

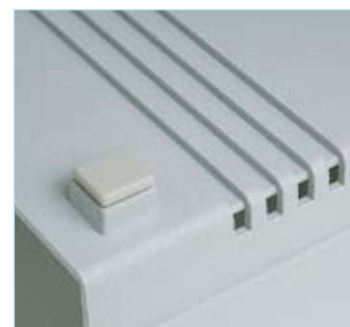
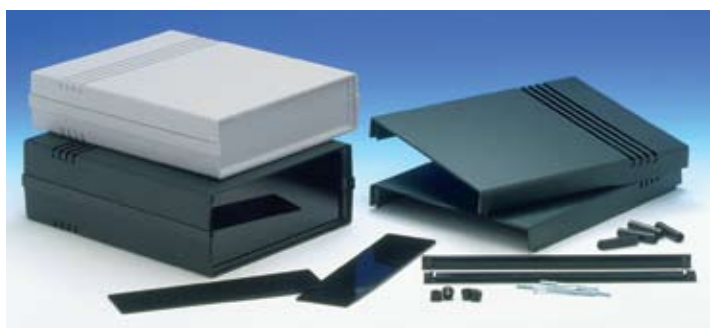
Upon request dual miniature clip for 9V battery (Mod. "AB9"), Self adhesive spacer for batteries (Mod. "DSA").

	Part-No		Ext. Dimensions			Material	Max PCB Size				Accessories
	Light gray RAL 9018	Black RAL 9004	L	W	H		L	W			
SQUID 1	SQ1.5	SQ1.9	100	60,5	21	ABS	52	48,5	3	2 x AA / 1 x 9V	AB9, DSA
	SQ1-IR.5	SQ1-IR.9	100	60,5	21	ABS	52	48,5	3	2 x AA / 1 x 9V	AB9, DSA
	SQ124.5	SQ124.9	100	60,5	21	ABS	52	48,5	3	2 x AA / 1 x 9V	AB9, DSA
	SQ124-IR.5	SQ124-IR.9	100	60,5	21	ABS	52	48,5	3	2 x AA / 1 x 9V	AB9, DSA
	SQ11.5	SQ11.9	100	60,5	21	ABS	52	48,5	3	2 x AA / 1 x 9V	AB9, DSA
	SQ11-IR.5	SQ11-IR.9	100	60,5	21	ABS	52	48,5	3	2 x AA / 1 x 9V	AB9, DSA
SQUID 2	SQ2.5	SQ2.9	174	60,5	23	ABS	110	52	3	2 x AA / 1 x 9V	AB9, DSA
	SQ2-IR.5	SQ2-IR.9	174	60,5	23	ABS	110	52	3	2 x AA / 1 x 9V	AB9, DSA
	SQ22.5	SQ22.9	174	60,5	23	ABS	110	52	3	2 x AA / 1 x 9V	AB9, DSA
	SQ22-IR.5	SQ22-IR.9	174	60,5	23	ABS	110	52	3	2 x AA / 1 x 9V	AB9, DSA



These ABS cases offer high style and flexibility for a wide variety of desktop or benchtop equipment. The series STRUMENTALIA come complete with easy-to-grip, multi-tilt support handles. Front and rear panels are moulded in ABS.
 Applications: • test instruments • industrial control systems • medical devices • modems and interfaces.

STRUMENTALIA

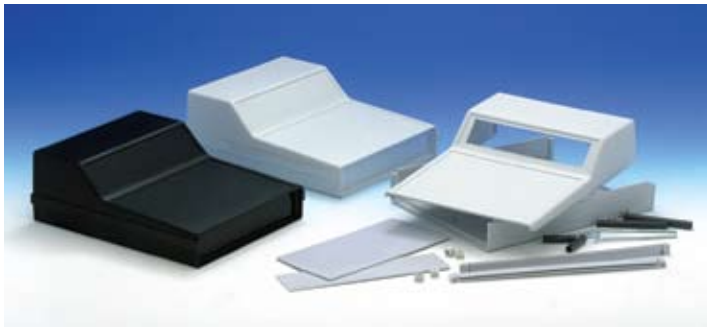


DESIGN

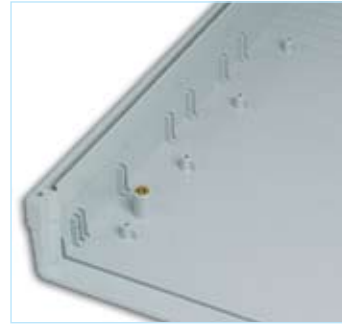
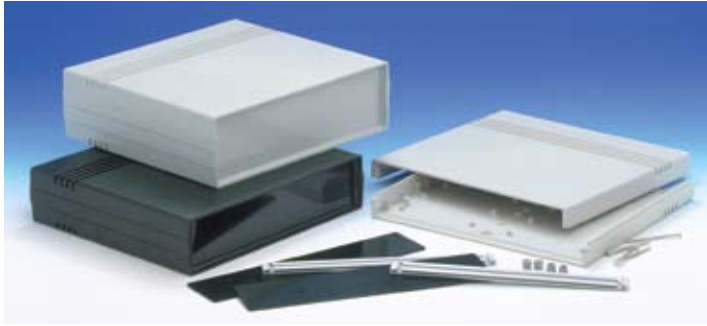
Cases with the front and rear panels moulded in ABS. The base and the cover have integral PCB guides and mounting studs. The models "761" and "762" come complete with easy-to-grip, multi-tilt support handles. Matt surface finishing. Closing by four screws with plastic feet.

	Part-No		Ext. Dimensions			Material	Max PCB Size				Accessories
	Light gray RAL 9018	Black RAL 9004	L	W	H		L	W			
765.5	765.9		271	216	63	ABS	240	200	4	-	PF/4
766.5	766.9		271	216	76	ABS	240	200	4	-	PF/4
767.5	767.9		271	216	89	ABS	240	200	4	-	PF/4
761.5	761.9		271	216	95	ABS	240	200	4	-	-
762.5	762.9		271	216	108	ABS	240	200	4	-	-

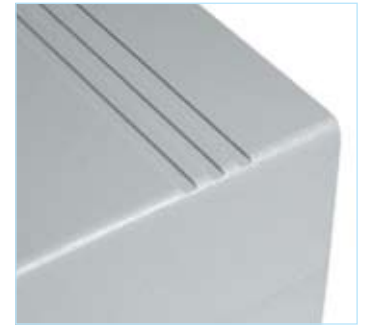
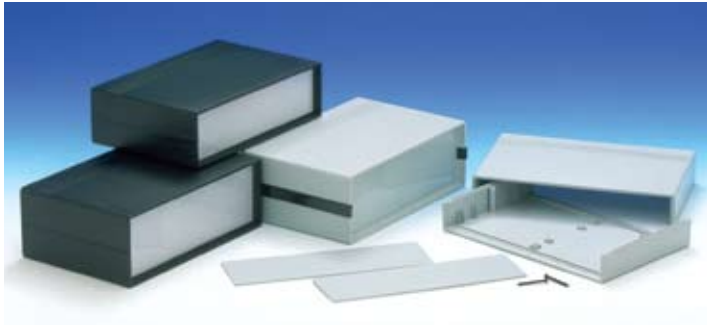
STRUMENTALIA PULPIT



STRUMENTA SAT



STRUMENTA MINOR



DESIGN

Cases with the front and rear panels moulded in ABS. The base and the cover have integral PCB guides and mounting studs. The models "763" and "764" have inclined cover with a recessed area or with cut-outs (175 x 35 mm.) for keyboard or display (Mod. "763/O" and "764/O"). Matt surface finishing. Closing by four screws.

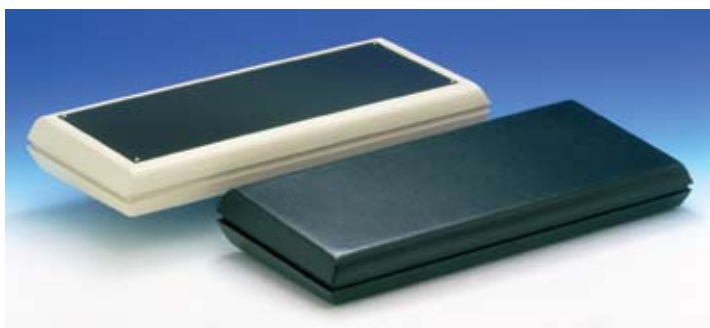
	Part-No		Ext. Dimensions			Material	Max PCB Size				Accessories
	Light gray	Black	L	W	H		L	W			
	RAL 9018	RAL 9004									
PULPIT	763.5	763.9	271	216	95,5	ABS	240	200	4	-	-
	764.5	764.9	271	216	108,5	ABS	240	200	4	-	-
	763/O.5	763/O.9	271	216	95,5	ABS	240	200	4	-	-
	764/O.5	764/O.9	271	216	108,5	ABS	240	200	4	-	-
SAT	861.5	861.9	271	300	63	ABS	282	230	4	-	-
	862.5	862.9	271	300	69,8	ABS	282	230	4	-	-
	863.5	863.9	271	300	89,8	ABS	282	230	4	-	-
MINOR	NE22.5	NE22.9	218	141,5	62	ABS	207,6	52,6	2	-	-
	NE23.5	NE23.9	218	141,5	69	ABS	207,6	59,6	2	-	-
	NE33.5	NE33.9	218	141,5	76	ABS	207,6	66,6	2	-	-
	NE43.5	NE43.9	218	141,5	75,5	ABS	207,6	66	2	-	-



These ABS cases offer high style and flexibility for a wide variety of desktop equipment with ergonomic design. Enclosures with simply assembly and suitable for numeric keypads and membrane keyboards.

Applications: • test instruments • industrial control systems • medical instruments • computer accessories • alarm and security systems • data systems engineering

PROCESSOR 4

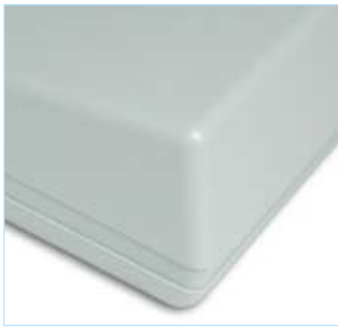


DESIGN

Cases manufactured from foam ABS. The cover is either solid (Mod. "PRO4P") or it has cutout (393 x 140 mm) with an 1.5 mm aluminium panel for keyboard or display (Mod. "PRO04"). All the models have a cutout for cables at the backside (400 x 40 mm). Matt surface finishing. Closing by four screws.

	Part-No		Ext. Dimensions			Material	Max PCB Size				Accessories
	White RAL 9002	Black RAL 9004	L	W	H		L	W			
PRO04.7	PRO04.9	465	209	73	ABS	-	-	4	-	-	
PRO4P.7	PRO4P.9	465	209	73	ABS	-	-	4	-	-	

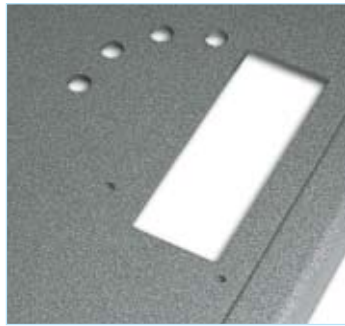
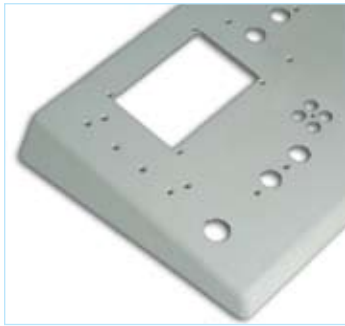
PROCESSOR 11



PROCESSOR 96



Mod. PRO96K



DESIGN

ABS cases with inclined cover. The base and the cover have integral PCB mounting studs. The models "PRO96" and "PRO96K" have the cover provided with a 1 mm recessed area for an easy assembly of membrane keyboards or aluminium panel. The model "PRO96K" has a IP65 sealing kit. Matt surface finishing. Closing by four screws. Upon request aluminium panel (Mod. "AP96").

Part-No		Ext. Dimensions			Material	Max PCB Size				Accessories
Light gray RAL 9018	Black RAL 9004	L	W	H		L	W			
PRO11.5	PRO11.9	320	210	81,9	ABS	-	-	4	-	-

Part-No		Ext. Dimensions			Material	Max PCB Size				Accessories
White RAL 9002	Black RAL 9004	L	W	H		L	W			
PRO96.7	PRO96.9	320	210	64,5	ABS	301	191	4	-	AP96
PRO96K.7	PRO96K.9	320	210	66,5	ABS	301	191	4	-	AP96



These ABS enclosures offer high style for a wide variety of telecommunication equipment. Easy assembly. Metal bracket for post installation included.

Applications: • amplifiers • channel filters • RF switches and diplexers • alarm and security system

BELL



DESIGN

Enclosures moulded in ABS. Simply assembly, screws are not required. Matt surface finishing. Metal bracket for post installation included.

	Part-No		Ext. Dimensions			Material	Max PCB Size				Accessories
			L	W	H		L	W			
	Light gray	-									
	RAL 9018	-									
	BELL.5		178	120	59	ABS	-	-	-	-	-
	BELL-2.5		130,5	75,5	48	ABS	-	-	-	-	-

COLOR



DESIGN

Enclosures moulded in ABS, screws are not required as two halves simply snap together. Matt surface finishing. Metal bracket for post installation included.

	Part-No		Ext. Dimensions			Material	Max PCB Size				Accessories
	Light gray	-	L	W	H		L	W			
	RAL 9018	-									
COLOR.5			90	80,5	48,1	ABS	-	-	-	-	-

VIDEOSTAR



DESIGN

Enclosures moulded in ABS, screws are not required as two halves simply snap together. Matt surface finishing. Metal bracket for post installation included.

	Part-No		Ext. Dimensions			Material	Max PCB Size				Accessories
	Light gray	-	L	W	H		L	W			
	RAL 9018	-									
VIDEOS1.5			107,7	59,4	38,2	ABS	-	-	-	-	-
VIDEOS2.5			158	85,3	43,6	ABS	-	-	-	-	-



The MODULOS series are designed for potting electronic assemblies. They protect against shock, humidity, temperature and chemicals. You can choose from many sizes and different colours. STORAGE series are ideal to store and organise small electronic components. They are moulded in polystyrene with transparent hinged lid.

STS

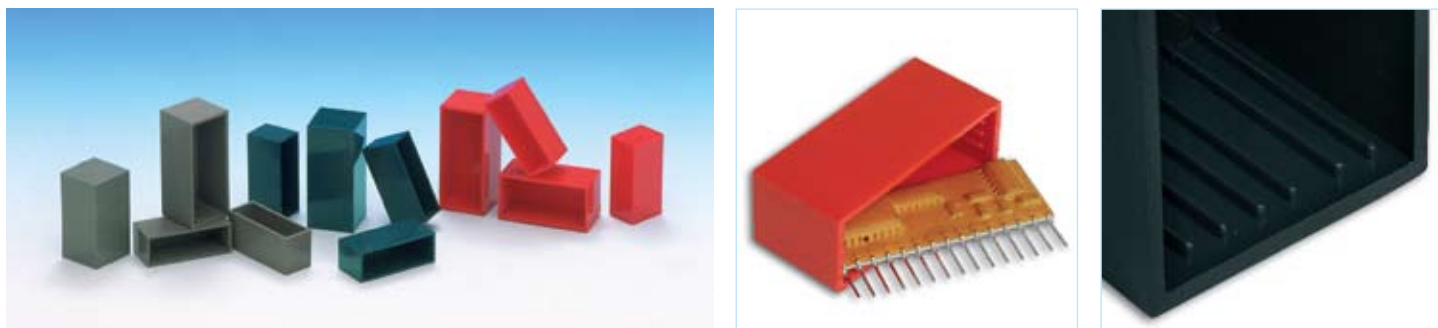


DESIGN

Circular shaped storage box moulded in transparent methacrylate, equipped with 10 sections to store and organise small electronic components.

	Part-No		Ext. Dimensions		Material	Max PCB Size				Accessories
	Transparent	-	Ø	H		L	W			
STS.0	-	-	90,5	18,5	PMMA	-	-	-	-	-

MODULOS

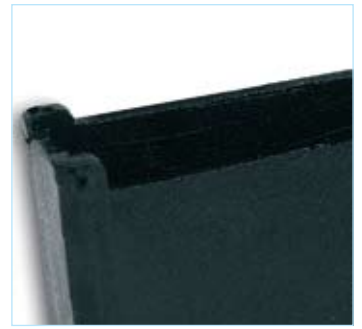
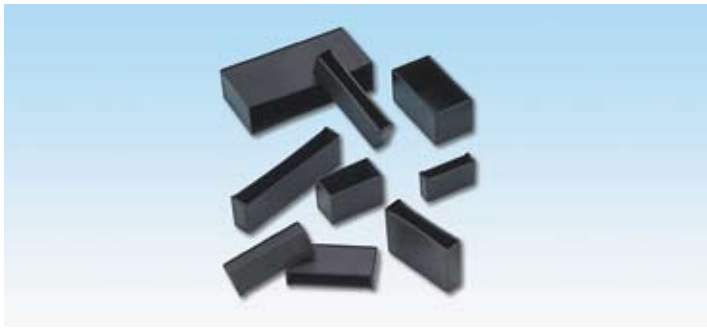


DESIGN

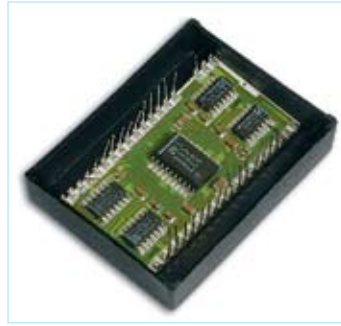
Small ABS enclosures for protecting and potting electronic assemblies. All models have internal guides for small PCB.

	Part-No			Ext. Dimensions			Material				MOQ (Minimum Order Quantity)
	Dark gray RAL 7037	Petrol blue RAL 5020	Red RAL 3020	L	W	H					
L50.8	L50.10	L50.24	52	22	21	ABS	-	-	-	150 Pcs.	
S38.8	S38.10	S38.24	40	15	19	ABS	-	-	-	100 Pcs.	

MODULOS S



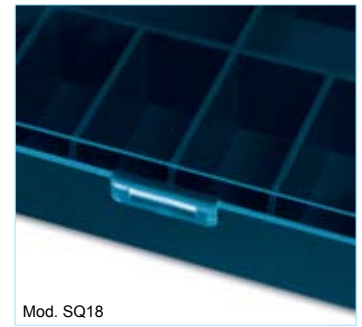
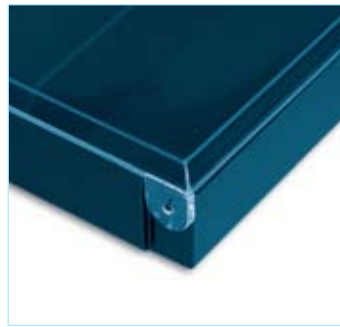
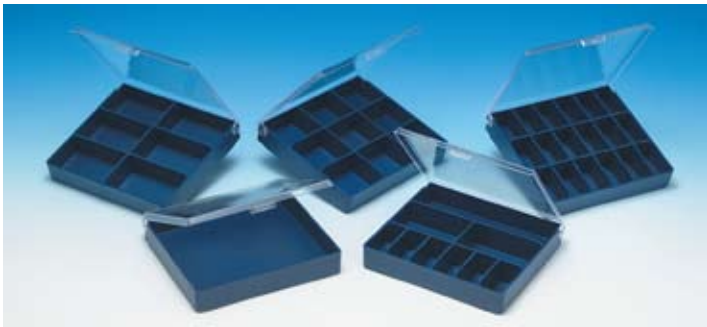
MODULOS L



DESIGN

Polyamide Nylon enclosures suitable for encapsulating electronic assemblies. Resistant to deformation and for extreme temperatures.

	Part-No	Ext. Dimensions			Material					MOQ (Minimum Order Quantity)
		L	W	H						
	Black RAL 9004	-								
S	S10.9	53	8	21	PA6	-	-	-	-	100
	S11.9	41	10	15	PA6	-	-	-	-	100
	S12.9	71	19	35	PA6	-	-	-	-	100
	S13.9	80	13	25	PA6	-	-	-	-	150
	S15.9	28	7	16	PA6	-	-	-	-	200
	S23.9	66,5	10	20	PA6	-	-	-	-	250
	S26.9	41	10	15	PA6	-	-	-	-	100
	S27.9	29	15	19	PA6	-	-	-	-	100
	S3.9	54	9	30	PA6	-	-	-	-	180
	S6.9	41	9	30	PA6	-	-	-	-	100
S9.9	41	8,5	21	PA6	-	-	-	-	100	
L	L10.9	28	21	7,4	PA6	-	-	-	-	200
	L15.9	29	29	11	PA6	-	-	-	-	150
	L16.9	41	29	11	PA6	-	-	-	-	100
	L17.9	29	15	8	PA6	-	-	-	-	100
	L18.9	41	24	6	PA6	-	-	-	-	200
	L21.9	55	29	11	PA6	-	-	-	-	100
	L23.9	33	31	8	PA6	-	-	-	-	100
	L24.9	41	24	8	PA6	-	-	-	-	150
	L25.9	54	42	11	PA6	-	-	-	-	100
	L27.9	33	18	6	PA6	-	-	-	-	200
	L28.9	55	29	7	PA6	-	-	-	-	100
	L33.9	55	29	11	PA6	-	-	-	-	150
	L40.9	42	22	21	PA6	-	-	-	-	200
	L5.9	54,5	29	17	PA6	-	-	-	-	150

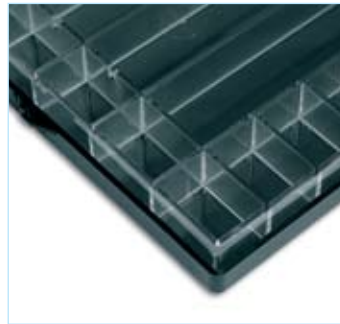
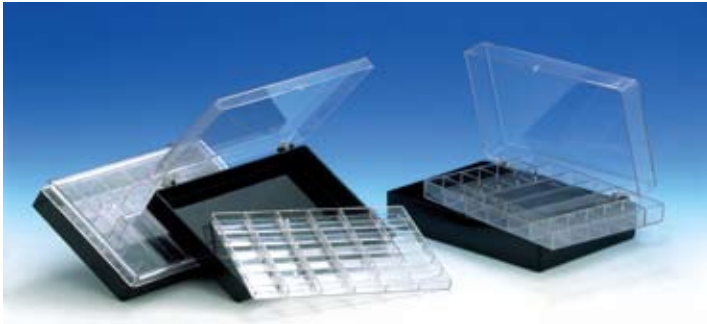


Mod. SQ18

DESIGN

Storage boxes are ideal to store and organise small electronic components. They are moulded in polystyrene with transparent hinged lid and blue bottom. Five models available.

SC



DESIGN

Series of small storage boxes with hinged transparent lid and bottom. According with the internal dimensions could be utilised up to 3 trays that can be inserted inside, which are available in 20, 28 and 36 sections (Mod. "SCA"). They are moulded in polystyrene. Glossy surfaces finishing.

SP



DESIGN

Series of small storage boxes with hinged transparent polystyrene lid and black bottom. Glossy surfaces finishing.

	Part-No			Ext. Dimensions			Material				
	Blue RAL 5010	Transparent -	Black RAL 9004	L	W	H					
SQ	SQ0.12			122	110	18	Ps	-	-	-	-
	SQ6.12			122	110	18	Ps	-	-	-	-
	SQ9.12			122	110	18	Ps	-	-	-	-
	SQ18.12			122	110	18	Ps	-	-	-	-
	SQM.12			122	110	18	Ps	-	-	-	-
SC			SC20.9	180	140,5	26	Ps	-	-	-	-
			SC32.9	180	140,5	38	Ps	-	-	-	-
			SC44.9	180	140,5	50	Ps	-	-	-	-
			SC45.9	180	140,5	51	Ps	-	-	-	-
			SC57.9	180	140,5	63	Ps	-	-	-	-
			SC70.9	180	140,5	76	Ps	-	-	-	-
SP			SP44.9	56,5	52	11	Ps	-	-	-	-
			SP104.9	56,5	52	16,5	Ps	-	-	-	-
			SP154.9	56,5	52	21,5	Ps	-	-	-	-
			SP1010.9	56,5	52	22	Ps	-	-	-	-
			SP204.9	56,5	52	26,5	Ps	-	-	-	-
			SP1510.9	56,5	52	27	Ps	-	-	-	-
			SP1515.9	56,5	52	32	Ps	-	-	-	-
			SP2010.9	56,5	52	32	Ps	-	-	-	-
		SP2015.9	56,5	52	37	Ps	-	-	-	-	
		SP2020.9	56,5	52	42	Ps	-	-	-	-	

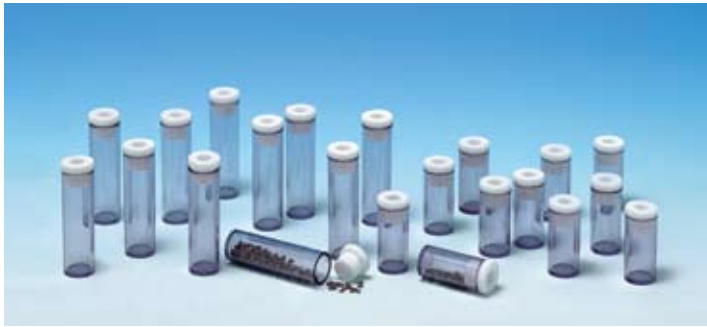


Mod. SDP18

DESIGN

Series of small storage boxes with hinged transparent polystyrene lid. Glossy surfaces finishing.

SMD



Mod. T25,T40

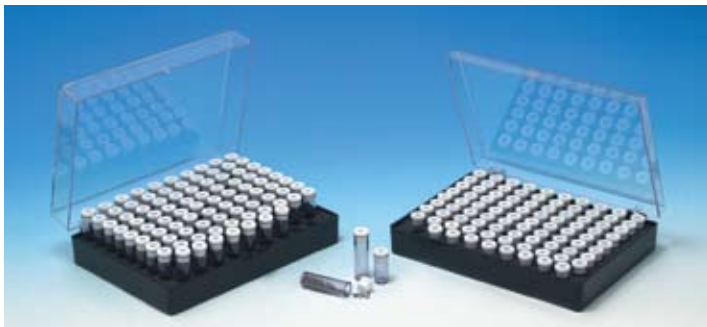


Mod. T14,T30

DESIGN

Polystyrene transparent tubes to store and organise small electronic components. Two different heights.

SMD BOX



Mod. SB25



DESIGN

Storage boxes are ideal to store and organise small electronic components. They are moulded in polystyrene with transparent hinged lids. The "SMD" boxes hold tubes (Mod. "T25" / "T40" / "T14" / "T30"). Four different models available.

	Part-No	Ext. Dimensions			Material									
		Transparent	-	-		L	W	H						
SDP	SDP0.0				64	95	17	Ps	-	-	-	-	-	-
	SDP12.0				64	95	17	Ps	-	-	-	-	-	-
	SDP18.0				64	95	17	Ps	-	-	-	-	-	-
SR	SR0.0				75	51	15	Ps	-	-	-	-	-	-
	SR2.0				75	51	15	Ps	-	-	-	-	-	-
	SR2L.0				75	51	15	Ps	-	-	-	-	-	-
	SR4.0				75	51	15	Ps	-	-	-	-	-	-
	SR6.0				75	51	15	Ps	-	-	-	-	-	-
SMD	T25.0				12	28	-	Ps	-	-	-	-	-	-
	T40.0				12	40	-	Ps	-	-	-	-	-	-
	T14.0				20	20	-	Ps	-	-	-	-	-	-
SB	T30.0				20	36	-	Ps	-	-	-	-	-	-
	SB25.0				180,5	140,5	38	Ps	-	-	-	-	-	89 TUBES
	SB40.0				180,5	140,5	50	Ps	-	-	-	-	-	89 TUBES
	SB14.0				180,5	140,5	26	Ps	-	-	-	-	-	35 TUBES
	SB30.0				180,5	140,5	50	Ps	-	-	-	-	-	35 TUBES



TEKO offers a selection of useful accessories and replacement parts. Designed to improve the flexibility of the Teko Enclosure Solutions.

PUSH BUTTONS



WITEK RING



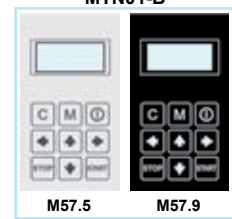
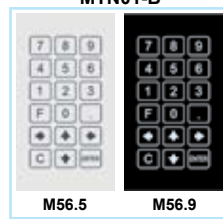
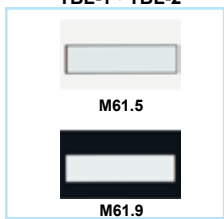
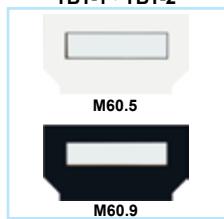
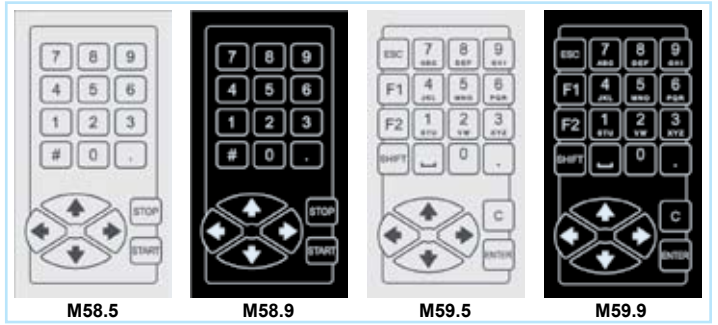
TEKAM SK



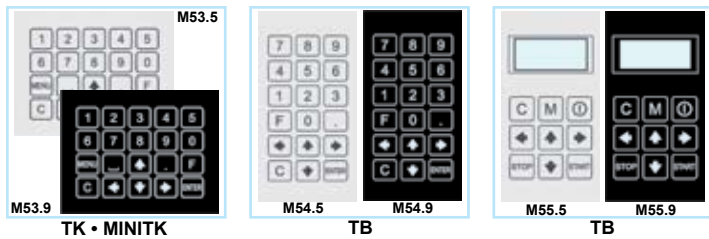
SWITCH MEMBRANE



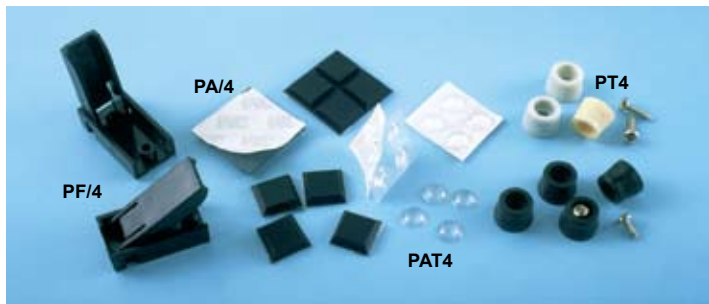
TENCLOS • TEKNET • TEKMag • TB-1 • TB-2 • TEKAL32 • TEKAM32



SWITCH MEMBRANE



FEET



DIN-RAIL



WALL SUPPORTS



MTU



LP-ICE



HANDLES



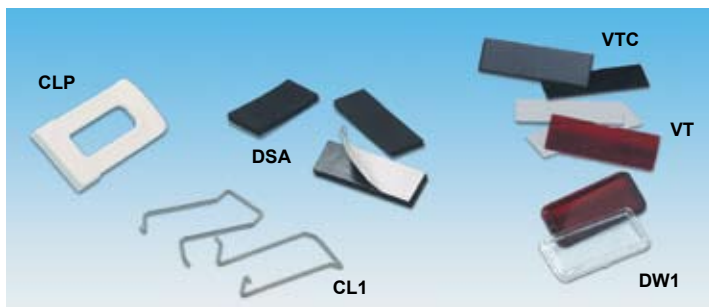
BATTERY CONTACTS



BATTERY DOOR



VARIOUS



PCB SUPPORTS





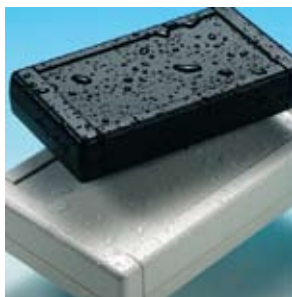
TEKO can make material changes to your enclosure to meet your engineering specification. Please look at our engineering information to choose material. Teko can supply certification that your custom material meets the material suppliers specification.

Plastic materials: ABS, Flame retardant ABS, Polystyrene, Flame retardant Polystyrene, Polycarbonate, PMMA, PC + ABS
Metallic materials: Pre-painted Aluminium, Hot tin plated Steel, Electrolytic tin plated Steel, Aluminium, Zinc, Magnesium

TEKO ENCLOSURES IP PROTECTION CLASSIFICATION

- IP65**
 OV-IP series (pg.52)
 TEKAM series (pg.13)
 TK series (pg.39)
 TEKBOX series (pg.45)
 PROCESSOR 96K (pg.60)
 MINITEKAL PK (pg.3)

- IP67**
 TEK MAG (pg.15)
 MINITEK MAG (pg.2)



FLAMMABILITY RATING

UL.94.V-O
 The test samples are extinguished within 5 seconds average time. None of the test samples burns longer than 10 seconds. No test samples emit burning particles.

UL.94.V-1
 The test samples are extinguished within 25 seconds average time (mean of 10 successive tests). None of the test samples burns longer than 30 seconds. No test samples emit burning particles.

UL.94.V-2
 The test samples are extinguished within 25 seconds average time (mean of 10 successive tests). None of the test samples burns longer than 30 seconds. The test samples emit burning particles during the test.

The test samples are extinguished in all cases mentioned above. If the sample keeps burning after 25 seconds, a horizontal test can be carried out to reach classification **94HB**.

UL.94.HB
 Horizontal test with samples of the defined thickness which must not burn faster than prescribed by UL.

PROTECTION GRADES AGAINST CONTACT AND FOREIGN BODIES			PROTECTION AGAINST WATER		
First digit	Significance	Definition	Second digit	Significance	Definition
0	Non-protected	No special protection	0	Non-protected	No special protection
1	Protected against solid objects greater than 50 mm	A large surface of the body, such as a hand (but no protection against deliberate access). Solid objects exceeding 50 mm in diameter.	1	Protected against dripping water	Dripping water (vertically falling drops) shall have no harmful effect.
2	Protected against solid objects greater than 12 mm	Fingers or similar objects not exceeding 80 mm in length. Solid objects exceeding 12 mm in diameter.	2	Protected against dripping water when tilted up to 15°	Vertically dripping water shall have no harmful effect when the enclosure is tilted at any angle up to 15° from its normal position.
3	Protected against solid objects greater than 2.5 mm	Tools, wires etc. of diameter of thickness greater than 2.5 mm. Solid objects exceeding 2.5 mm in diameter.	3	Protected against spraying water	Water falling as a spray at an angle up to 60° from the vertical shall have no harmful effect.
4	Protected against solid objects greater than 1.0 mm	Wires or strips of thickness greater than 1.00 mm. Solid objects exceeding 1.00 mm in diameter.	4	Protected against splashing water	Water splashed against the enclosure from any direction shall have no harmful effect.
5	Protected against deposit of dust	Access of dust is not totally prevented but dust does not enter in sufficient quantity to interfere with satisfactory operation of the equipment.	5	Protected against water jets	Water projected by a nozzle against the enclosure from any direction shall have no harmful effect.
6	Protected against access of dust	No access of dust.	6	Protected against heavy seas	Water from heavy seas or water projected in powerful jets shall not enter the enclosure in harmful quantities.
			7	Protected against the effects of immersion	Access of water in a harmful quantity shall not be possible when the enclosure is immersed in water under defined conditions of pressure and time.
			8	Protected in submerged state	Water may not enter in harmful quantities when the enclosure is held under water.
according to IEC 529; DIN 40050; BS 5490					

PROPERTIES OF PLASTIC MATERIALS	Units	Standards	ABS	Flame Retardant ABS	Polystyrene	Polycarbonate
Mechanical Properties						
Impact resistance	KJ/m ²	ISO 179 DIN 53453	80	no fracturing	no fracturing	-
Notch resistance	KJ/m ²	ISO 179 DIN 53453	11	6.5	9.5	30
Ball indentation hardness H.30	N/mm ²	DIN 53456	100	76	115	110
Modulus of elasticity	KN/mm ²	ISO 178 DIN 53457	2.6	2.1	2.4	2.3
3.5% bending stress	N/mm ²	ISO 178 DIN 53452	73	55	60	70
Elongation at tear	%	DIN 53455	25	-	50	110
Thermal properties						
Heat distortion temperature	C°	DIN 53458 ISO 75-A DIN 53461	90	82	80	128
Vicat softening temperature	C°	ISO 306 DIN 53460	103	88	94	148
Cold distortion temperature	C°		-40	-40	-40	-150
UL combustibility test	Fire classific.	UL-Subject 94	HB	V-0	HB	V-2
Thermal conductivity	W/(K · M)	DIN 52612	0.19	-	0.16	0.21
Electrical properties						
Tracking resistance KC/CTI	Stage	IEC 112 DIN 53480	600	420	200	250
Specific volume resistivity	Ohm · cm	DIN 53482 VDE 0303	10 ¹⁵	10 ¹³	10 ¹⁶	10 ¹⁶
Dielectric strength	Kv/mm	IEC 243 DIN 53481	26	75	40	30
Other properties						
Water absorption	%	DIN 53472 DIN 53495	0.3	-	0.1	0.15

All ABS enclosures are manufactured in ANTISTATIC ABS type. ABS is an amorphous termopolymer obtained from the grafting of styrene and acrylonitrile onto polybutadiene. Its principal characteristics is high impact resistance, dimensional stability, good appearance and easy workability. Teko can provide the certification on request.

EMI-RFI SHIELDING



EMI DIRECTIVE

The EMI pollution problem has become serious enough to attract the attention of government agency and to establish acceptance limits for the electromagnetic emissions of electronic equipment. After years of debate the European Community (EC) has also adopted a legal limit on electromagnetic emissions as laid down in EC directive 89/336/EEC with effect from January 1992. A number of amendments of this directive were made, including the provision of a transition period of four years ending 31 December 1995.

United States 1981 FCC Docket N° 20780

Germany 1977/8 VDE 0871 VDE 0875

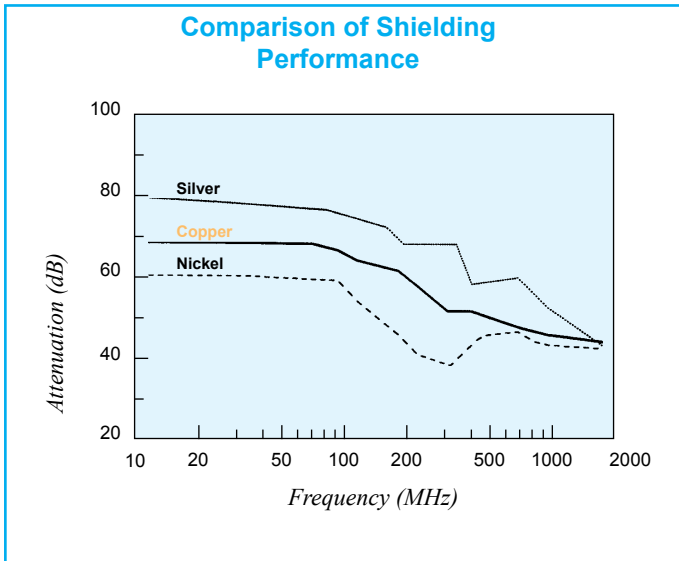
E.C. 89/336/EEC

The most popular and cost effective method of achieving EMC involves the use of electrically conductive, resin bonded shielding coatings. Conductive fillers (graphite, silver, nickel, copper) dispersed in a resin matrix are applied on the plastic enclosure with conventional spray equipment.

NICKEL COATING is now the European industry standard for shielding plastic enclosures of electronic and telecommunications equipment.

COPPER COATING is used as shielding coating with better reflective properties at lower frequencies than nickel.

SILVER COATING is the highest guarantee against the electromagnetic emissions.

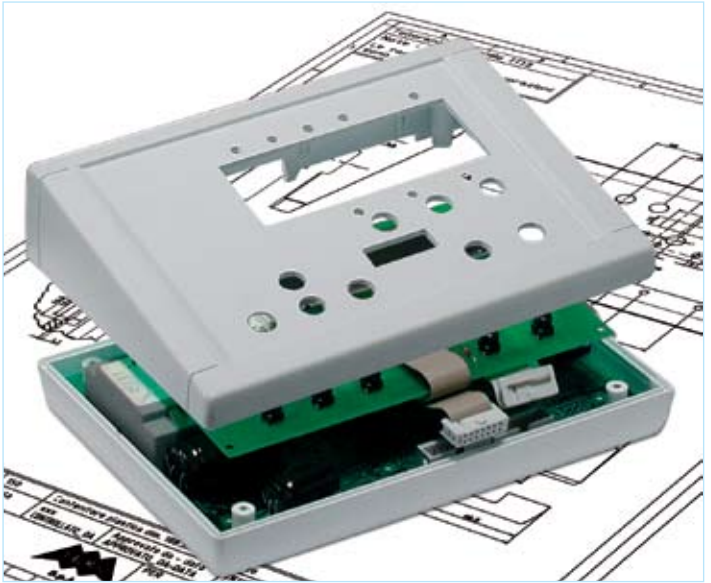




The TEKO range of housing represents a highly variable system which also permits tailor-made solutions to specific requirements. TEKO has invested heavily in an extensively equipped workshop facility. From your Engineering drawings, we can supply all your machining requirements, enabling you to receive the Enclosure, ready for your assembly work, immediately upon receipt. By utilising this Service, not only do you save time, your cost can be better controlled through lack of wastage. With 50 years experience in design and production of high quality products, the TEKO engineering staff can collaborate in every phase of the customer product design cycle. The TEKO Quality Assurance department maintains control over all incoming material, with Process Audit, Final Inspection and Tool Calibration.



TEKO work shop offers a service for custom-made special finishing.



Custom.TEKNET



Custom.ST1-C2



Custom.TEKBOX



Custom.SQUID



From your Engineering drawings, we can supply all your machining requirements, enabling you to receive the enclosure, ready for your assembly work, immediately upon receipt.

Your advantages:

- Quick delivery
- Calculable costs
- Quality control
- No risk of rejections
- Complete service from one source



Teko Service center will customise standard enclosures with any geometric shape or pattern on modern CNC-controlled machines.



Well-fitting work, work performance at the corresponding equipment.



High quality of surface and reproducibility will be guaranteed. Clear and complete drawings of your project work.



Teko service center offers: silk-screening, tampo-printing and laser marking on the exterior surfaces of the enclosures, laquering and custom switch membranes.

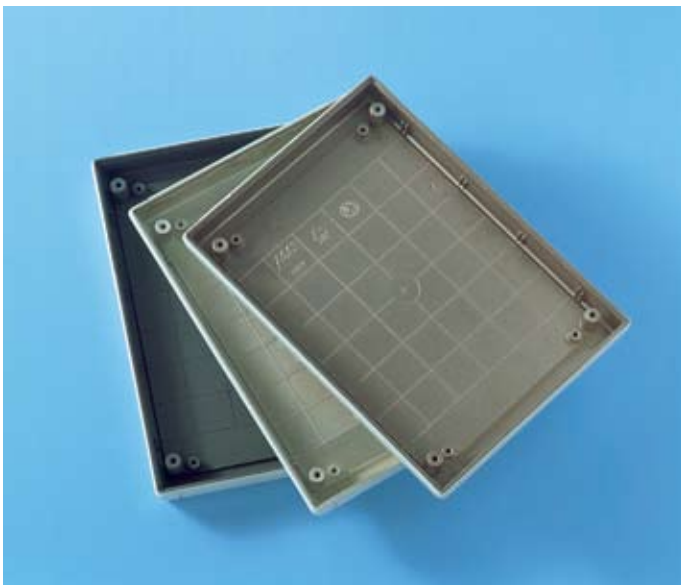
CUSTOMISING SERVICE



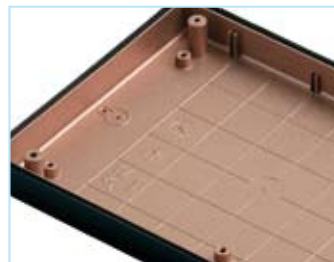
CNC MACHINING



INSERT TOOLING



SHIELDING





DECORATION



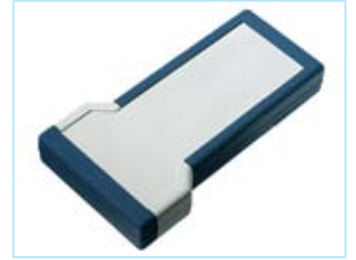
METALLIC FINISHING



WOOD EFFECTS



SOFT-TOUCH COATING



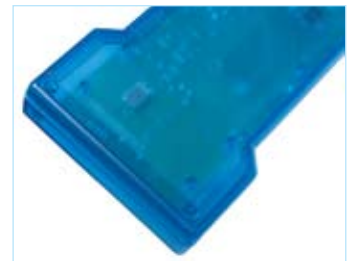
SOFT-LOOK COATING



ALTERNATIVE MATERIALS



SPECIAL COLOURS



TRANSPARENT COLOURS



CUSTOM MATERIALS



FLAME RETARDANT MATERIALS



SWITCH MEMBRANE



BACKLIGHTING



DIGITAL PRINTING



LASER CUTTING



PUNCHING



PRINTING



TAMPO



SILK SCREENING



DIGITAL PRINTING



LASER MARKING



PROTOTYPING





DO YOU REQUIRE A COMPLETELY CUSTOM ENCLOSURE?

Today, the competitive strength of development and production companies in electronic and mechanical engineering is heavily dependent of their ability to respond promptly to changing market demands. In view of the short development cycles of high-tech solutions, it is necessary to present the market with new developments on an ongoing bases, especially in electronics industry. It is for such tailor-made enclosure solutions that TEKO offers partnership and cooperation, providing all-round support in project planning, development and manufacture.



THE DESIGN CONCEPT

As your packaging solution source, we survive you to understand and verify what is expected of the project. During this process step we evaluate industrial designs and ergonomic issues, and then employ our intellectual property to deliver the best possible solutions.



PRODUCT DESIGN

Once product concept is completed, we design enclosure that fits within your budget and manufacturing specifications. Rapid prototypes with 3D lithography modeling.



PRODUCT ENGINEERING

In this phase, TEKO staff verifies that you product is fully manufacturable, with an eye to improving manufacturing productivity.



MANUFACTURING TOOL DEVELOPMENT

In order to develop your unique enclosure, specific manufacturing tooling must be accurately developed based on the product design or prototype.



PRODUCT MANUFACTURING

Production of your custom enclosure is a discipline we have successfully accomplished for years. Contacting us to manufacture your product ensures that the final enclosure will meet your precise expectations.

INDEX



Mod.	pg.	433	18	10016	51	3/A	9	AL-3	16	DS1470	20
101	25	434	18	10120	54	3/B	9	AL-4	16	DS2470	20
102	25	435	18	10124	55	4/A	9	AL-5	16	DS2480	20
103	25	436	18	11120	54	4/B	9	AL-6	16	DS3470	20
104	25	443	18	11121	54	450F	35	AL-7	16	DS3480	20
115	26	444	18	11122	54	450S	36	AL-8	16	DSA	68
215	26	445	18	11123	54	450SP	36	AL-9	16	DW1	68
222	32	446	18	11124	54	550F	35	AUS-11	29	FLATRACK2	20
223	32	453	18	11125	54	550S	36	AUS-12	29	FLATRACK3	20
233	32	454	18	11126	54	550SP	36	AUS-22	29	FLATRACK4	20
242	32	455	18	12121	54	590/D	36	AUS-23	29	H1	68
243	32	456	18	12122	54	660F	35	AUS-33	29	H2	68
271	18	550	35	12123	54	660F-B	35	AUS-41	29	HS	33
272	18	560	35	16120	18	660S	36	AUS-44	29	HS-B	33
273	18	590	36	16160	18	660S-B	36	AUS-45	29	HSK	33
274	18	660	35	011	32	660SP	36	AUS-55	29	HSK-B	33
292	18	690	36	011-B	32	660SP-B	36	BC/1	9	HSW	33
293	18	750	35	012	32	680-B	36	BC/2	9	HSW-B	33
294	18	760	35	012-B	32	680D-B	36	BC/3	9	HY	38
331	9	761	57	022	32	690/D	36	BC/4	9	HY-B	38
332	9	762	57	022-B	32	763/O	58	BELL	61	HYP	38
333	9	763	58	1/A	9	764/O	58	BELL-2	61	HYP-B	38
334	9	764	58	1/B	9	770F	35	BH-1	68	ICE/1	68
335	9	765	57	10002-B	32	770S	36	BH-2	68	ICE/2	68
362	25	766	57	10003-B	32	770SP	36	BH-3	68	K/1	22
363	25	767	57	10005-B	55	780-B	35	CAB-V0	32	K/2	22
364	25	770	35	10005-DW1	55	790/D	36	CH/1	9	KL-11	29
371	18	790	36	10006/1	50	880-B	35	CH/2	9	KL-12	29
372	18	861	58	10006/2	50	931-C	30	CH/3	9	KL-22	29
373	18	862	58	10009A-B	55	932-C	30	CH/4	9	KL-41	29
374	18	863	58	10009-B	55	933-C	30	CL1	68	KL-44	29
381	9	931	30	10012-B	51	980-B	35	CLP	68	L10	64
382	9	932	30	10013-B	51	AB1,5	68	COFFER-1	23	L15	64
383	9	933	30	10120/2	54	AB12	68	COFFER-2	23	L16	64
384	9	934	30	115P	26	AB2	68	COFFER-3	23	L17	64
385	9	935	30	115TP	26	AB2032	68	COFFER-4	23	L18	64
386	9	936	30	151/P	21	AB22	68	COFFER-A/5	23	L21	64
392	18	1111	34	152/P	21	AB9	68	COFFER-A/6	23	L23	64
393	18	1122	34	153/P	21	ABM	68	COFFER-A/7	23	L24	64
394	18	1661	18	154/P	21	AL-1	16	COFFER-A/8	23	L25	64
395	18	1680	18	2/A	9	AL-10	16	COFFER-TP1	23	L27	64
396	18	2211	34	2/B	9	AL-11X	16	COFFER-TP2	23	L28	64
397	18	2222	34	215P	26	AL-12X	16	COFFER-TP3	23	L33	64
398	18	3710	18	215TP	26	AL-13X	16	COFFER-TP4	23	L40	64
399	18	4020	18	2211-B	34	AL-14X	16	COLOR	62	L5	64
402	18	10001	32	2222-B	34	AL-15X	16	CP/1	22	L50	63
403	18	10002	32	222-B	32	AL-16X	16	CP/2	22	LP1	68
404	18	10003	32	223-B	32	AL-17X	16	CP/3	22	LP2	68
405	18	10004	28	233-B	32	AL-18X	16	CP/4	22	M	67
406	18	10005	28	242/O	32	AL-19X	16	D-12	27	M1	22
421	9	10006	50	242-B	32	AL-2	16	D-13	27	M1/P	22
422	9	10007	50	243/O	32	AL-20X	16	D-14	27	M50	68
423	9	10008	50	243-B	32	AL-21X	16	DA635	68	M51	68
424	9	10010	51	2H	33	AL-22X	16	DEC-1	28	M52	68
425	9	10011	51	2H-B	33	AL-23X	16	DOMO1	40	M53	68
426	9	10014	50	2HK	33	AL-24X	16	DOMO2	40	M54	68
427	9	10015	51	2HK-B	33	AL25X	16	DR	68	M56	67

M58	67	P/2	22	SLS40	5	ST1	49	TEKAL-23/E	11	TKK33	39
M59	67	P/3	22	SM1	37	ST1-C2	49	TEKAL-23B	11	TKK33S	39
MC11	32	P/4	22	SM1S	37	STS	63	TEKAL-23B/E	11	TKK33SP	39
MC12	32	PA/4	68	SM2	37	T14	66	TEKAL-31	12	TKK44	39
MC22	32	PAT4	68	SM2-2B	37	T25	66	TEKAL-31/E	12	TK-S	38
MOK1	41	PC	51	SM2-4B	37	T30	66	TEKAL-31SP	14	TN11	47
MOK2	41	PC-1	51	SM2S	37	T40	66	TEKAL-32	12	TN12	47
MT1	68	PCB	68	SM-B	37	TB	43	TEKAL-32/E	12	TN13	4
MT2	68	PCBR	68	SMS-2B	37	TB-1	45	TEKAL-32SP	14	TN21-B	47
MT5	68	PC-IR	51	SMS-4B	37	TB-1B	45	TEKAL-33	12	TN21-B2	47
MTG01-B2K	2	PC-XIR	51	SMS-B	37	TB-1BK	45	TEKAL-33/E	12	TN22	47
MTG01-BK	2	PF/4	68	SP1010	65	TB-1K	45	TEKAL-33SP	14	TN22-B	47
MTG01K	2	PRO04	59	SP104	65	TB-1S	45	TEKAL-41	12	TN22-B2	47
MTK465	14	PRO11	60	SP1510	65	TB-1SB	45	TEKAL-41/H	12	TN23	4
MTK465PK	3	PRO4P	59	SP1515	65	TB-1SP	45	TEKAL-42	12	TN23-B	4
MTK480	14	PRO96	60	SP154	65	TB-2	45	TEKAL-42/H	12	TN23-B2	4
MTK480PK	3	PRO96K	60	SP2010	65	TB-2B	45	TEKAL-T1	14	TN33	4
MTK5110PK	3	PT4	68	SP2015	65	TB-2BK	45	TEKAL-T1B	14	TNP21	47
MTK580PK	3	RACK2	20	SP2020	65	TB-2K	45	TEKAL-T2	14	TNP22	47
MTK6110	14	RACK3	20	SP204	65	TBL-1	45	TEKAL-T2B	14	TNP22-B	47
MTK6110PK	3	RACK4	20	SP44	65	TBL-1B	45	TEKAM-11	13	TNP22-B2	47
MTK680	14	RC124	55	SQ0	65	TBL-1BK	45	TEKAM-11/E	13	TNP23	4
MTK680PK	3	ROUNDRACK2	20	SQ1	56	TBL-1K	45	TEKAM-12	13	VIDEOS1	62
MTK-F	41	ROUNDRACK3	20	SQ11	56	TBL-2	45	TEKAM-12/E	13	VIDEOS2	62
MTK-S	41	ROUNDRACK4	20	SQ11-IR	56	TBL-2B	45	TEKAM-13	13	VS1	12
MTN01-B	47	RWK-2	5	SQ124	56	TBL-2BK	45	TEKAM-13/E	13	VS2	12
MTU	68	RWK-3	5	SQ124-IR	56	TBL-2K	45	TEKAM-21	13	VS3	12
MW	67	S10	64	SQ18	65	TBT-1	45	TEKAM-21/E	13	VT	68
MW55	68	S11	64	SQ1-IR	56	TBT-1B	45	TEKAM-22	13	VTC	68
MW57	67	S12	64	SQ2	56	TBT-1BK	45	TEKAM-22/E	13	WALL2	24
MW60	67	S13	64	SQ22	56	TBT-1K	45	TEKAM-23	13	WALL3	24
MW61	67	S15	64	SQ22-IR	56	TBT-2	45	TEKAM-23/E	13	WALL4	24
NE22	58	S18	64	SQ2-IR	56	TBT-2B	45	TEKAM-31	13	WK-2	52
NE23	58	S23	64	SQ6	65	TBT-2BK	45	TEKAM-31/E	13	WK-3	52
NE33	58	S26	64	SQ9	65	TBT-2K	45	TEKAM-32	13		
NE43	58	S27	64	SQM	65	TBT-B	45	TEKAM-32/E	13		
OK1	40	S3	64	SR0	66	TEKAL-11	11	TEKAM-33	13		
OK1-B	40	S38	63	SR01	34	TEKAL-11/E	11	TEKAM-33/E	13		
OK1-B2	40	S6	64	SR01-E	34	TEKAL-11B	11	TG22-B2K	15		
OK2	40	S9	64	SR120	34	TEKAL-11B/E	11	TG22-BK	15		
OK2-B	40	SB14	66	SR120-E	34	TEKAL-12	11	TG22K	15		
OK2-B2	40	SB25	66	SR170	34	TEKAL-12/E	11	TK11	39		
OT1	67	SB30	66	SR170-E	34	TEKAL-12B	11	TK11S	39		
OT2	67	SB40	66	SR2	66	TEKAL-12B/E	11	TK11SP	39		
OT3	67	SC20	65	SR22	34	TEKAL-13	11	TK22	39		
OV-IP/0	52	SC32	65	SR22-E	34	TEKAL-13/E	11	TK33	39		
OV-IP/1	52	SC44	65	SR23	34	TEKAL-13B	11	TK33S	39		
OV-IP/2	52	SC45	65	SR23-E	34	TEKAL-13B/E	11	TK33SP	39		
OV-IP/3	52	SC57	65	SR2L	66	TEKAL-21	11	TK44	39		
OV-IP/4	52	SC70	65	SR33	34	TEKAL-21/E	11	TKAMSK1	67		
OVO-1	53	SDP0	66	SR33-E	34	TEKAL-21B	11	TKAMSK2	67		
OVO-2	53	SDP12	66	SR34	34	TEKAL-21B/E	11	TKAMSK3	67		
OVO-3/0	53	SDP18	66	SR34-E	34	TEKAL-22	11	TK-F	38		
OVO-3/1	53	SL170	20	SR4	66	TEKAL-22/E	11	TKK11	39		
OVO-3/2	53	SL230	20	SR6	66	TEKAL-22B	11	TKK11S	39		
OVO-3/3	53	SL280	20	SR75	34	TEKAL-22B/E	11	TKK11SP	39		
P/1	22	SLS25	5	SR75-E	34	TEKAL-23	11	TKK22	39		

NEW PRODUCT



ENCLOSURE
SOLUTIONS



TEKO S.p.A.

Via dell'Industria 5
40068 S. Lazzaro di Savena (BO) - ITALY
Tel.: +39-051-62.55.190 - Fax: +39-051-62.56.520

www.teko.it
E-Mail: teko@teko.it